



ARTIST'S CONCEPT*

THE NIMRIT VILLA ELEVATION 'A'

2320 SQ.FT.



ARTIST'S CONCEPT*

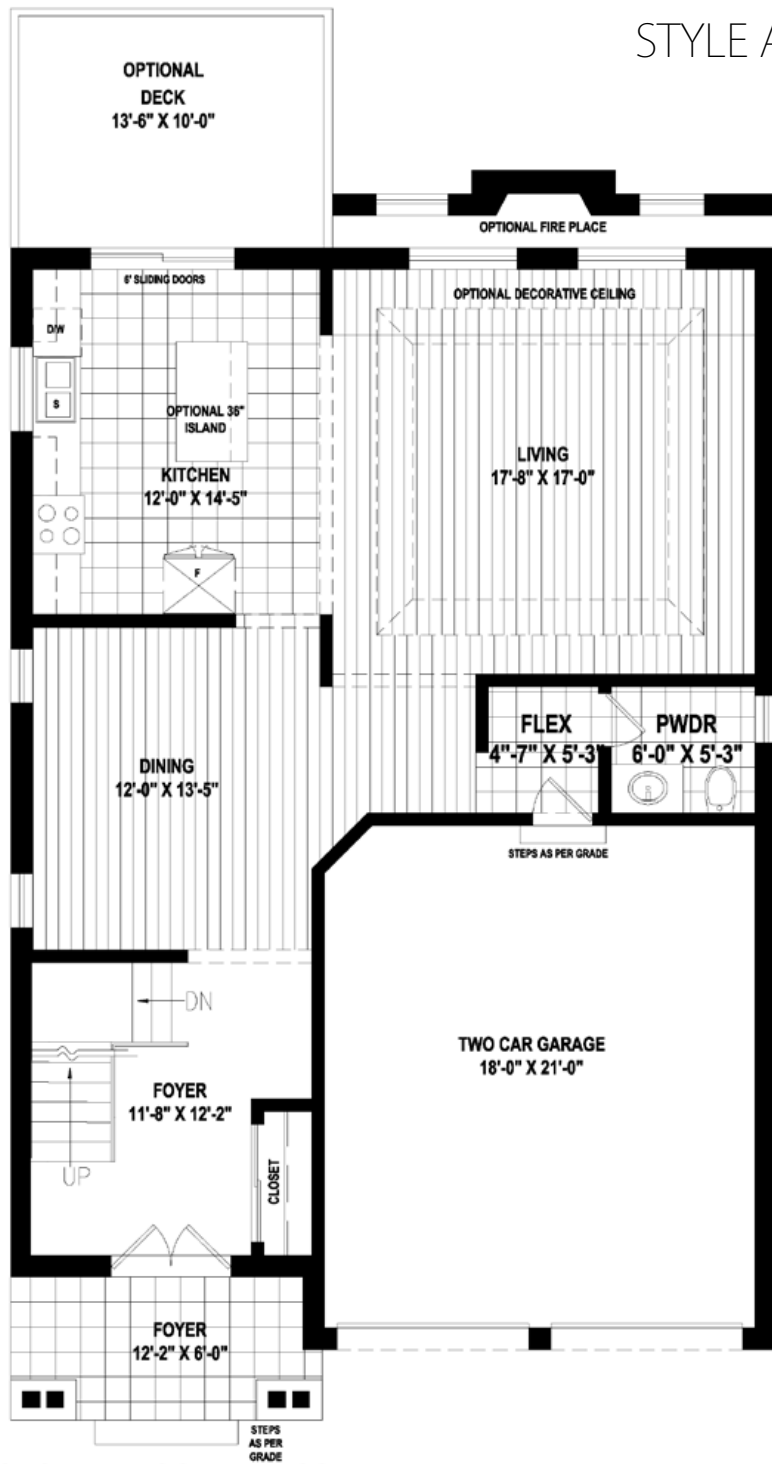
THE NIMRIT VILLA ELEVATION 'B'

2320 SQ.FT.

THE NIMRIT VILLA ELEVATION 'C'

2320 SQ.FT.

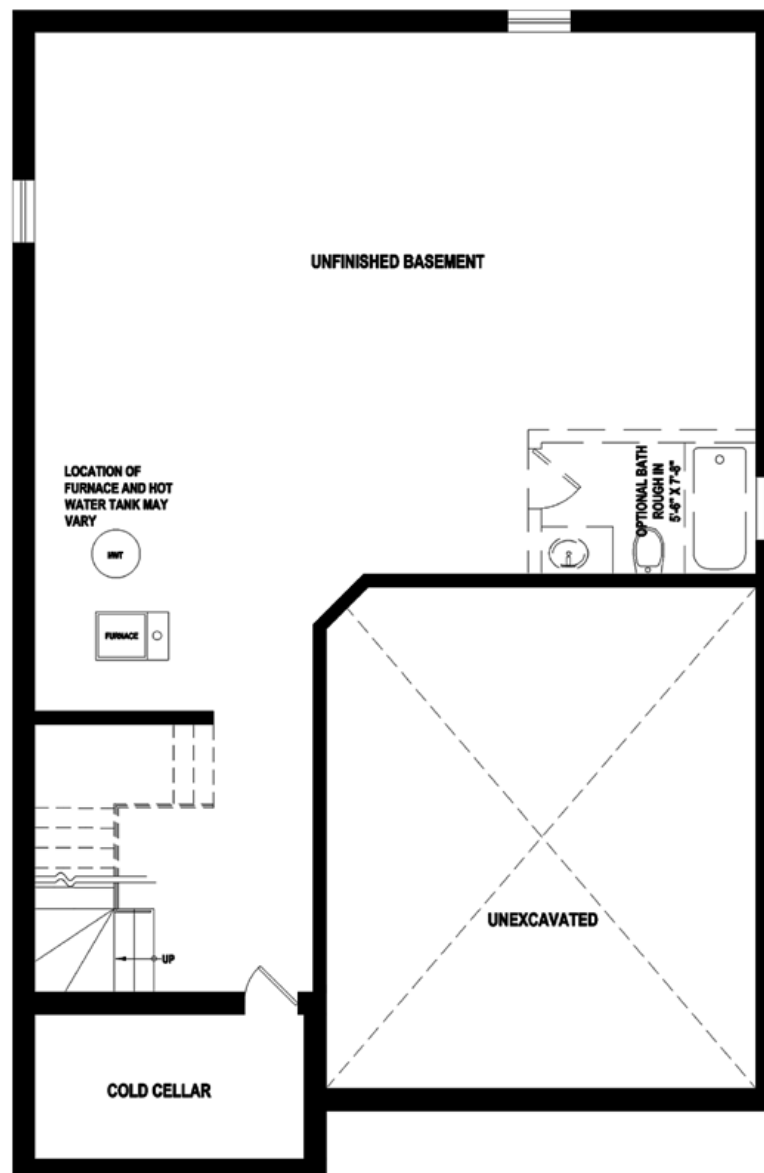
STYLE A - 2320 SQ.FT.



GROUND FLOOR : 1024 sq.ft.



SECOND FLOOR : 1296 sq.ft.



BASEMENT

Notes:

- Base prices are subject to change.
- Prices include HST with rebate going to the builder.
- Prices do not include Lot Premiums on enlarged/pie shaped lots.
- The height of the main floor ceiling is 8'.
- **Elevation A** – Front elevation to have **brick** on first floor with **stucco** on the 2nd floor. Side and back elevations to be all **vinyl siding**.
- **Elevation B** – Front elevation to have **stone** on first floor with **stucco** on the 2nd floor. Side and back elevations to be all **vinyl siding**.
- **Elevation C** – Front elevation to have **stucco** with balance to be **brick** and/or **stucco**. Side and back elevations to include **stucco** with the balance to be **vinyl siding**.

*All dimensions are approximate. Sizes and specifications are subject to change without notice. E. & O. E. All illustrations are artist's concept. Actual usable floor space varies from the stated floor area.