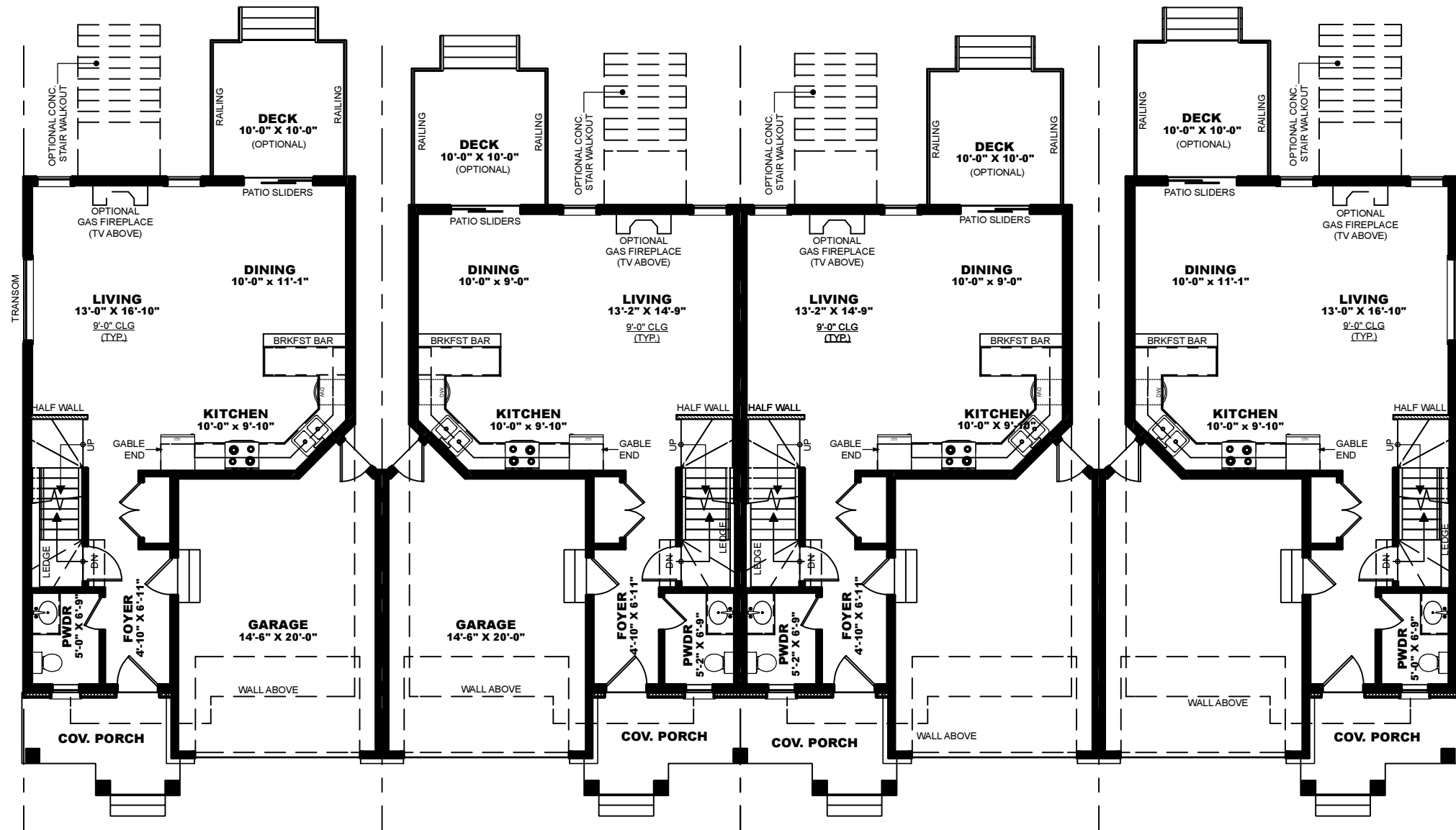


CENTENNIAL CONSTRUCTION

THE VILLAGE AT PEAKS BAY

4 UNIT BLOCK



END UNIT
 MAIN FLOOR - 704 SQ. FT
 UPPER FLOOR - 937 SQ. FT
 TOTAL - 1,641 SQ. FT

MIDDLE UNIT
 MAIN FLOOR - 653 SQ. FT
 UPPER FLOOR - 886 SQ. FT
 TOTAL - 1,539 SQ. FT

MIDDLE UNIT
 MAIN FLOOR - 653 SQ. FT
 UPPER FLOOR - 886 SQ. FT
 TOTAL - 1,539 SQ. FT

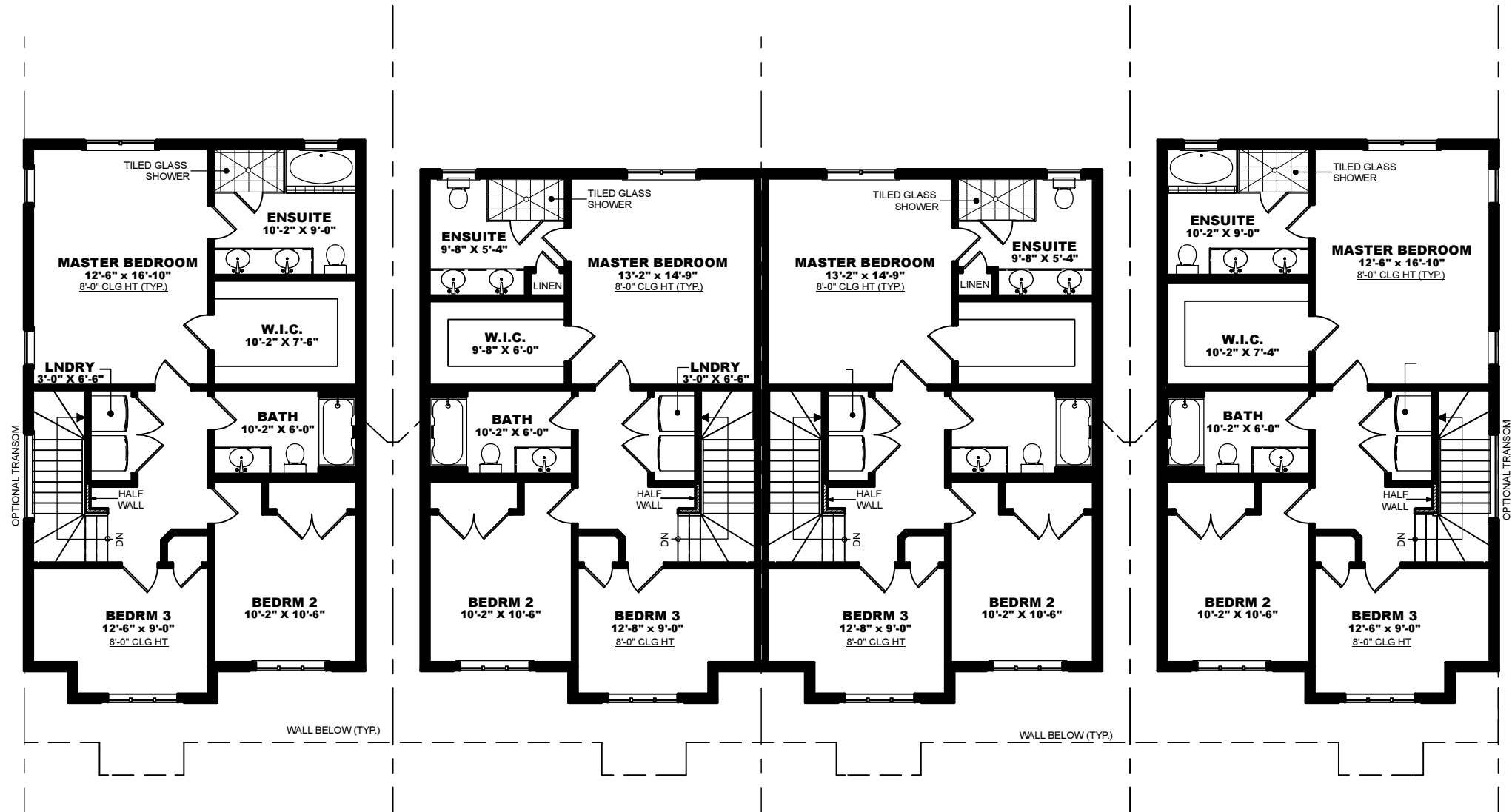
END UNIT
 MAIN FLOOR - 704 SQ. FT
 UPPER FLOOR - 937 SQ. FT
 TOTAL - 1,641 SQ. FT

MAIN FLOOR PLAN

CENTENNIAL CONSTRUCTION

THE VILLAGE AT PEAKS BAY

4 UNIT BLOCK



END UNIT
 MAIN FLOOR - 704 SQ. FT
 UPPER FLOOR - 937 SQ. FT
 TOTAL - 1,641 SQ. FT

MIDDLE UNIT
 MAIN FLOOR - 653 SQ. FT
 UPPER FLOOR - 886 SQ. FT
 TOTAL - 1,539 SQ. FT

MIDDLE UNIT
 MAIN FLOOR - 653 SQ. FT
 UPPER FLOOR - 886 SQ. FT
 TOTAL - 1,539 SQ. FT

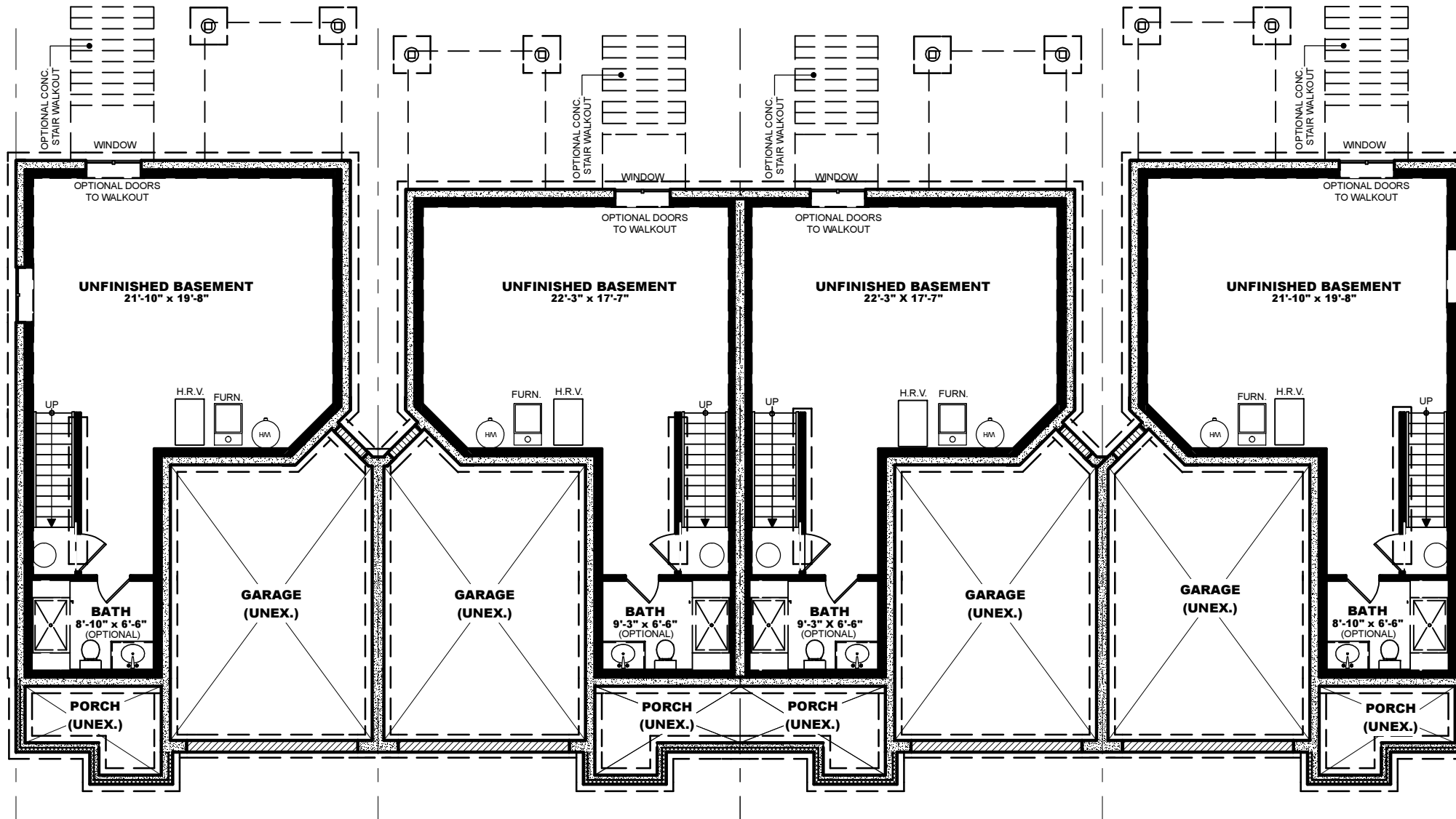
END UNIT
 MAIN FLOOR - 704 SQ. FT
 UPPER FLOOR - 937 SQ. FT
 TOTAL - 1,641 SQ. FT

UPPER FLOOR PLAN

CENTENNIAL CONSTRUCTION

THE VILLAGE AT PEAKS BAY

4 UNIT BLOCK



LOWER FLOOR PLAN