



THE MADISON ELEVATION `A`

1775 SQ.FT.

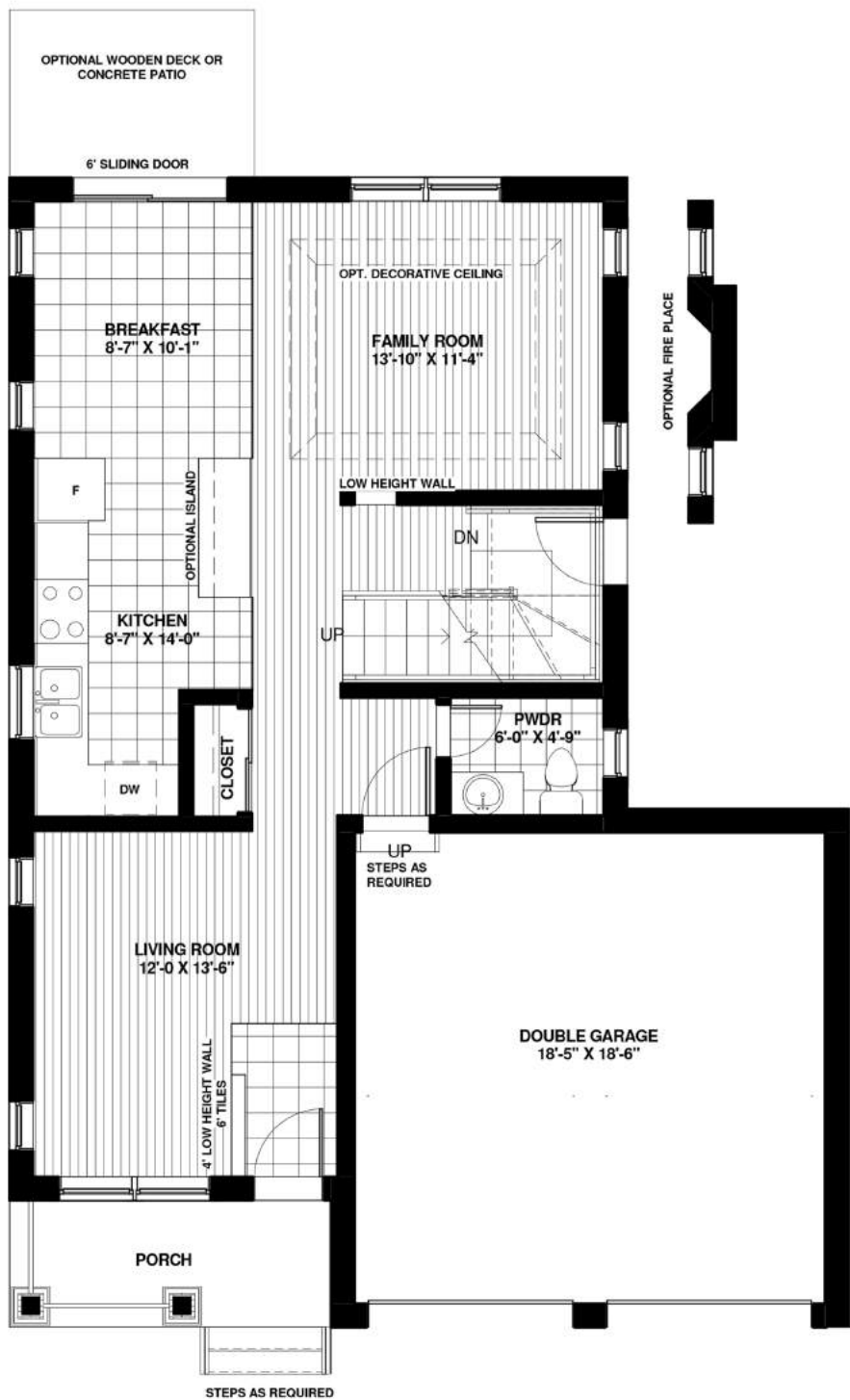


THE MADISON ELEVATION `B`

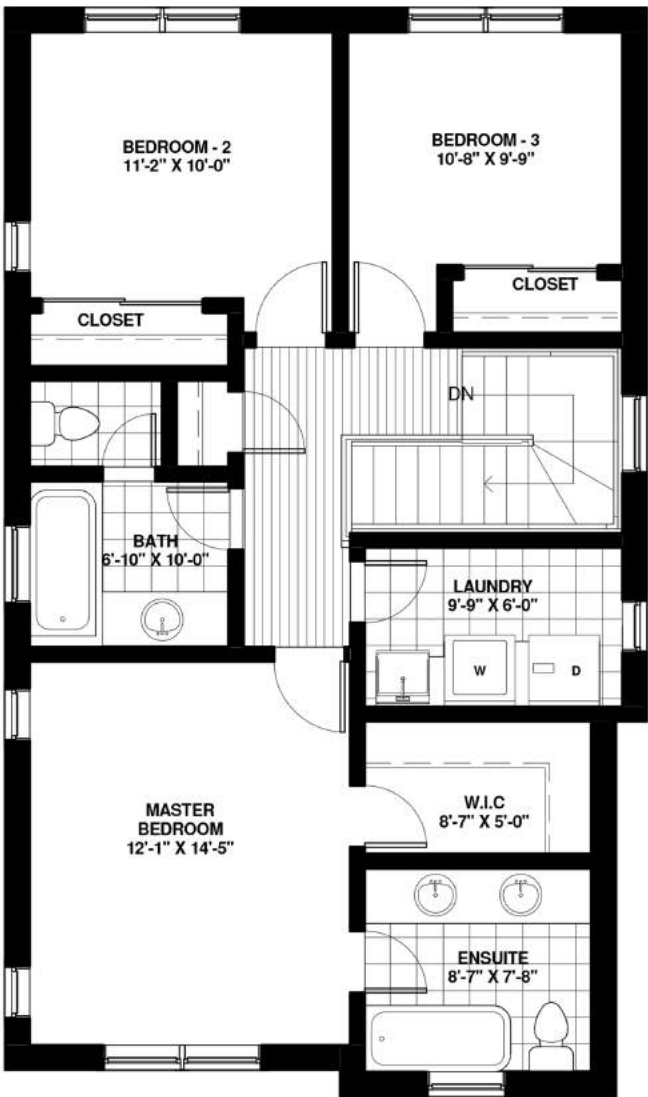
1775 SQ.FT.

THE MADISON ELEVATION `C`

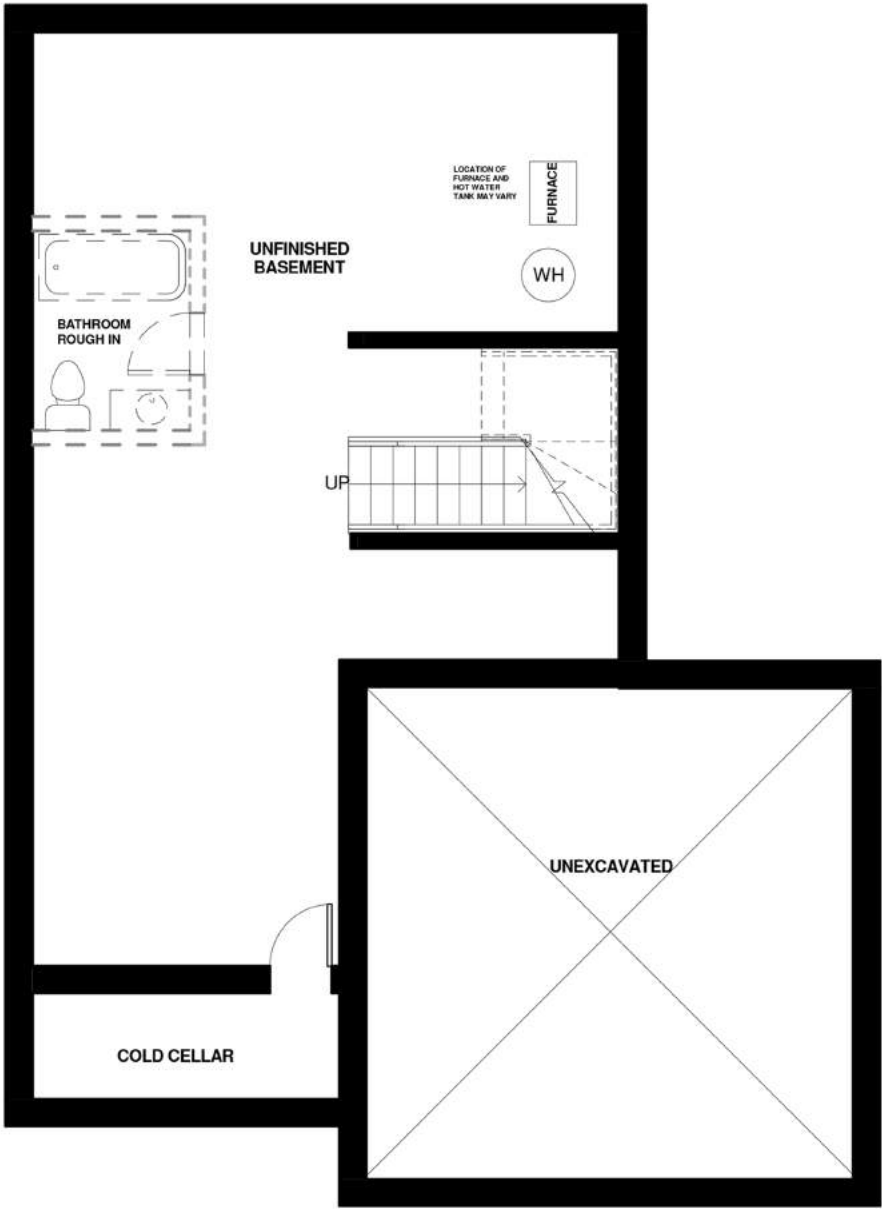
1775 SQ.FT.



GROUND FLOOR : 813 sq.ft.



SECOND FLOOR : 962 sq.ft.



BASEMENT

Notes:

- Base prices are subject to change.
- Prices include HST with rebate going to the builder.
- Prices do not include Lot Premiums on enlarged/pie shaped lots.
- The height of the main floor ceiling is 8'.
- **Elevation A** – Front elevation to have **brick** on first floor with **vinyl siding** on the 2nd floor. Side and back elevations to be all **vinyl siding**.
- **Elevation B** – Front elevation to have **4' stone skirt** with balance to be **brick** and/or **stucco**. Side and back elevations to be all **vinyl siding**.
- **Elevation C** – Front elevation to have **4' stone skirt** with balance to be **brick** and/or **stucco**. Side and back elevations to include **4' brick skirt** with the balance to be **vinyl siding**.

*All dimensions are approximate. Sizes and specifications are subject to change without notice. E. & O. E. All illustrations are artist's concept. Actual usable floor space varies from the stated floor area.



THE HUDSON ELEVATION `A`

2019 SQ.FT.

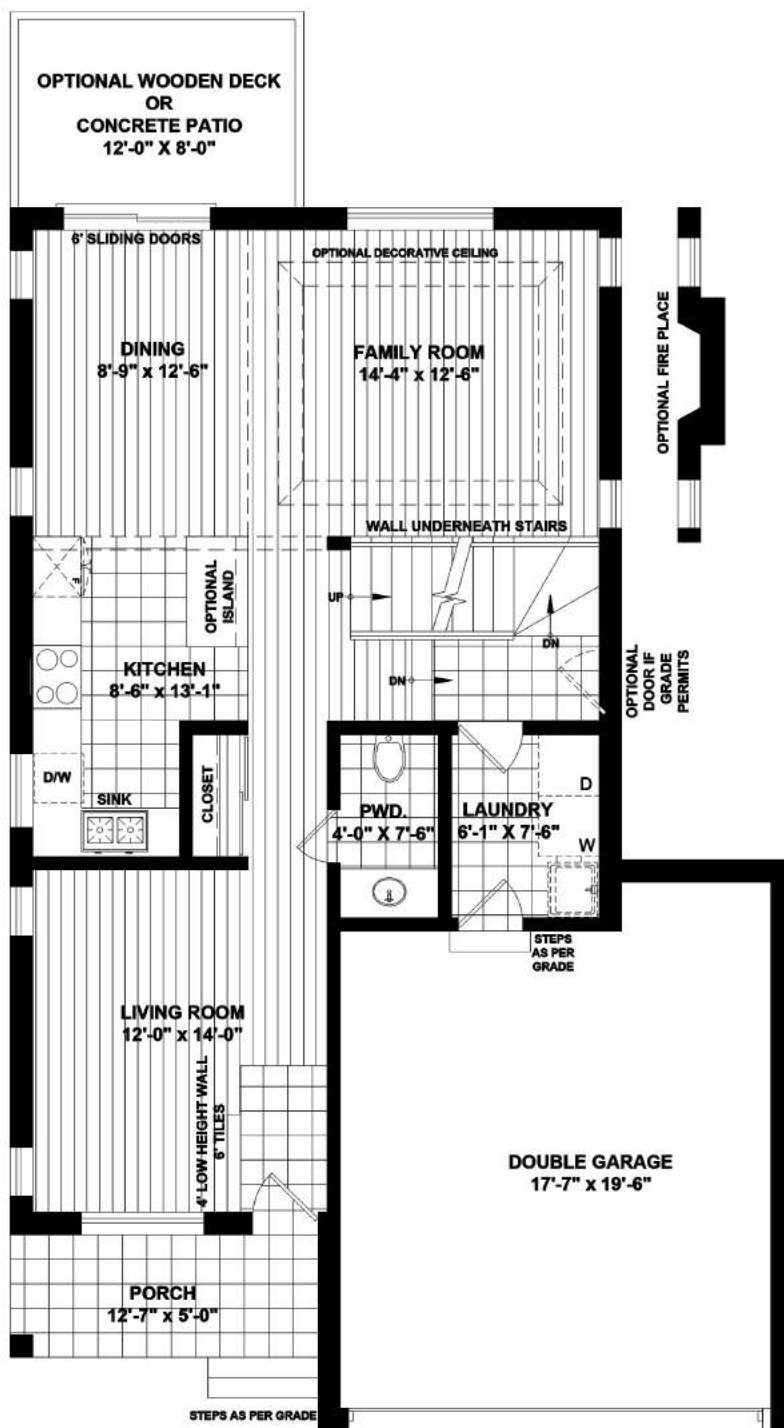


THE HUDSON ELEVATION `B`

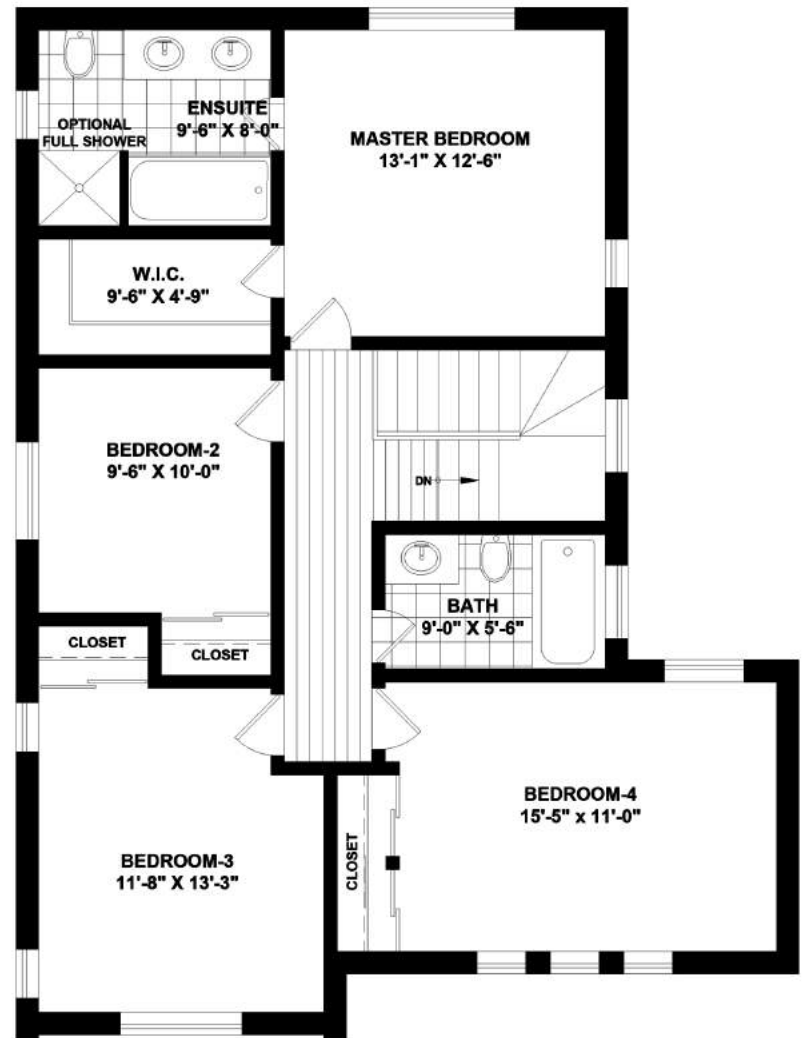
2019 SQ.FT.

THE HUDSON ELEVATION `C`

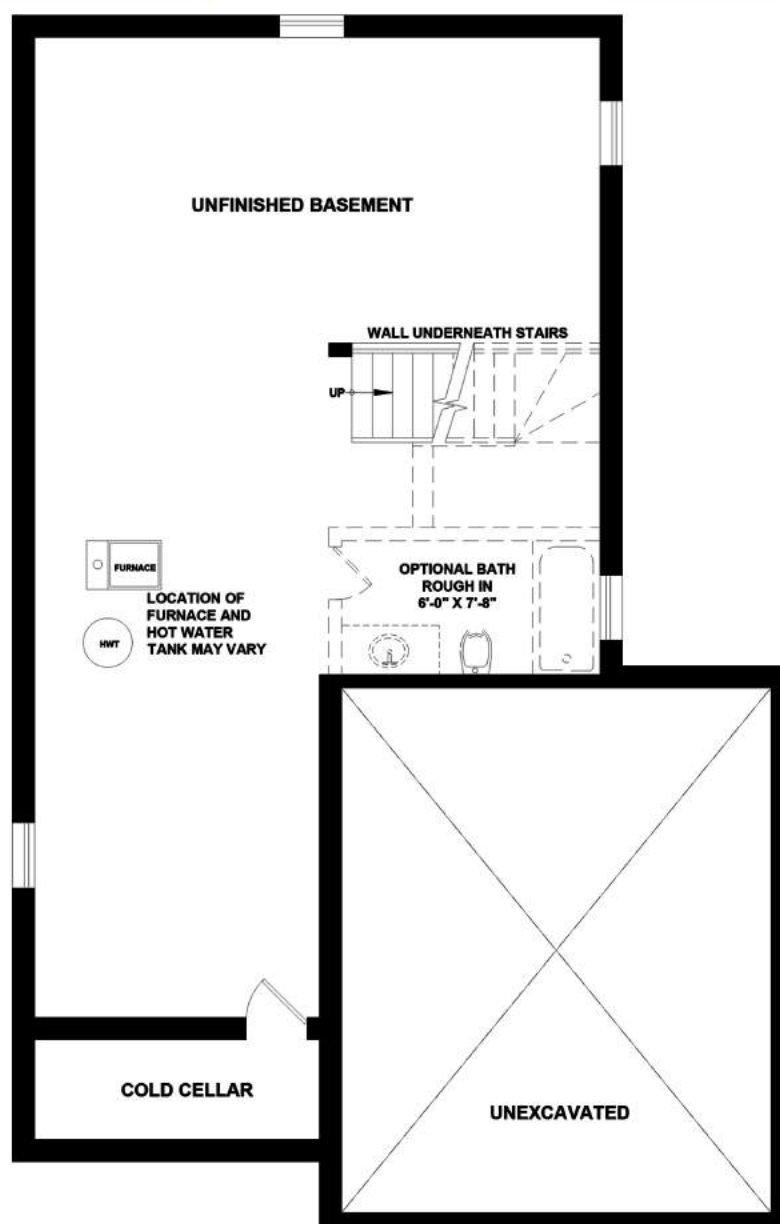
2019 SQ.FT.



GROUND FLOOR : 907 sq.ft.



SECOND FLOOR : 1112 sq.ft.



BASEMENT

Notes:

- Base prices are subject to change.
- Prices include HST with rebate going to the builder.
- Prices do not include Lot Premiums on enlarged/pie shaped lots.
- The height of the main floor ceiling is 8'.
- **Elevation A** – Front elevation to have **brick** on first floor with **vinyl siding** on the 2nd floor. Side and back elevations to be all **vinyl siding**.
- **Elevation B** – Front elevation to have **4' stone skirt** with balance to be **brick** and/or **stucco**. Side and back elevations to be all **vinyl siding**.
- **Elevation C** – Front elevation to have **4' stone skirt** with balance to be **brick** and/or **stucco**. Side and back elevations to include **4' brick skirt** with the balance to be **vinyl siding**.

*All dimensions are approximate. Sizes and specifications are subject to change without notice. E. & O. E. All illustrations are artist's concept. Actual usable floor space varies from the stated floor area.



ARTIST'S CONCEPT*

THE SIENNA ELEVATION 'A'

2335 SQ.FT.



ARTIST'S CONCEPT*

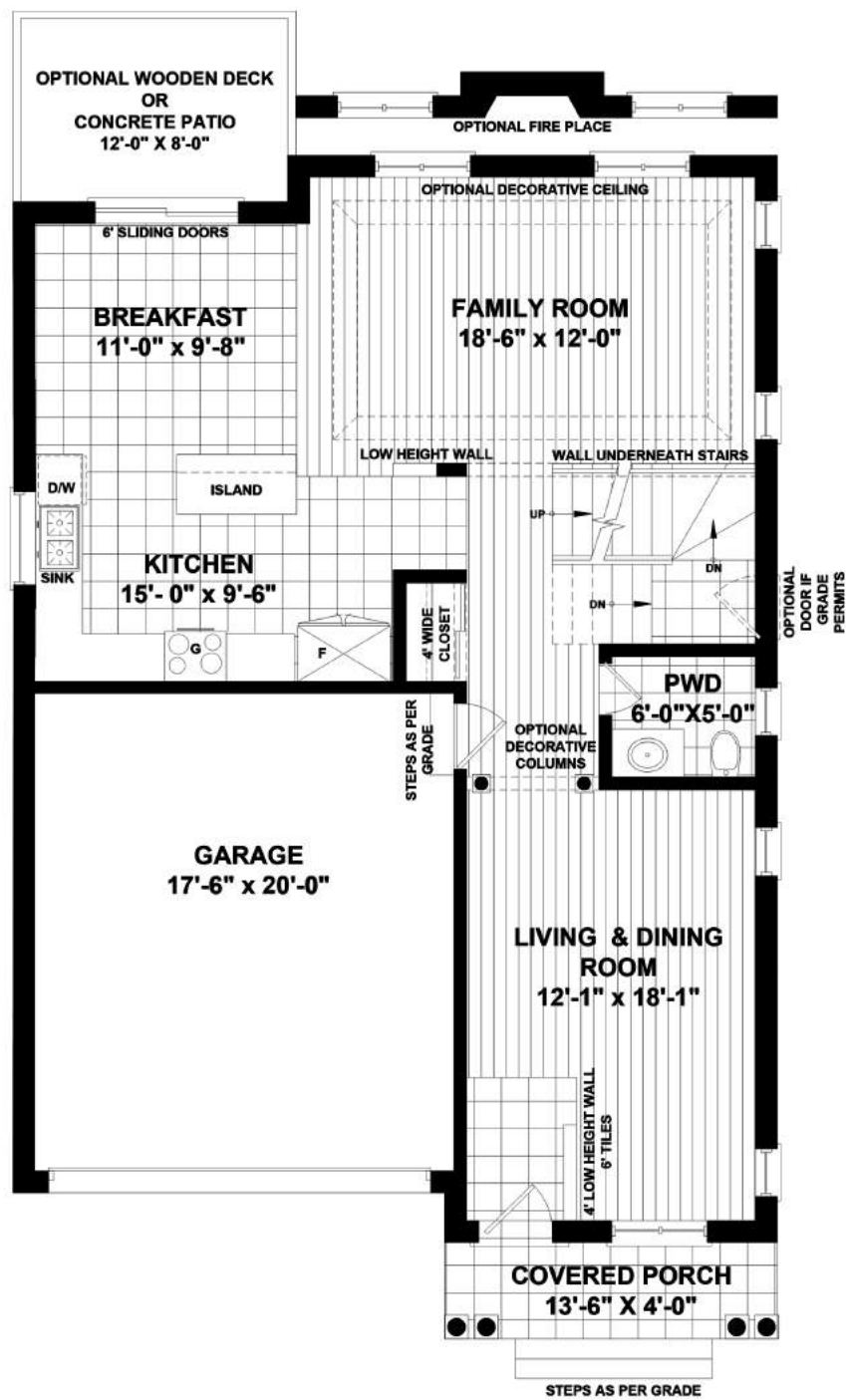
THE SIENNA ELEVATION 'B'

2335 SQ.FT.

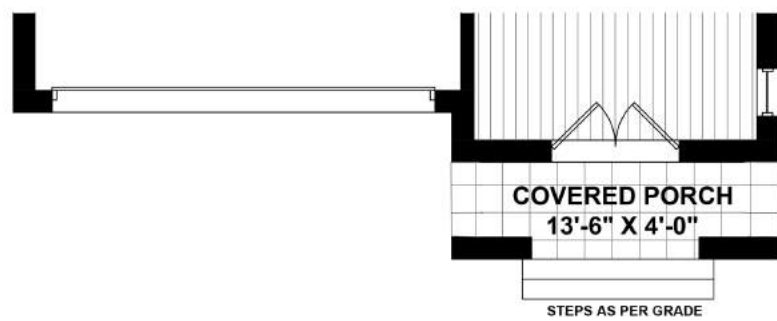
THE SIENNA ELEVATION 'C'

2335 SQ.FT.

*All dimensions are approximate. Sizes and specifications are subject to change without notice. E. & O. E. All illustrations are artist's concept. Actual usable floor space varies from the stated floor area.

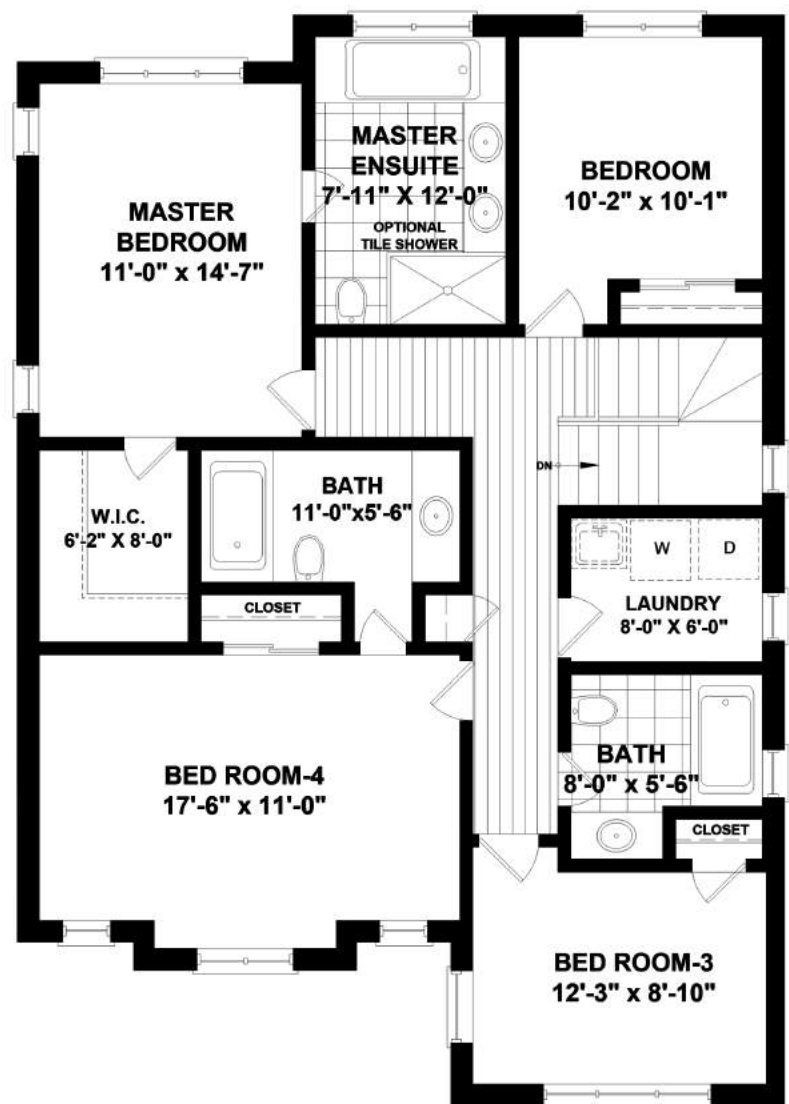


OPTION - A

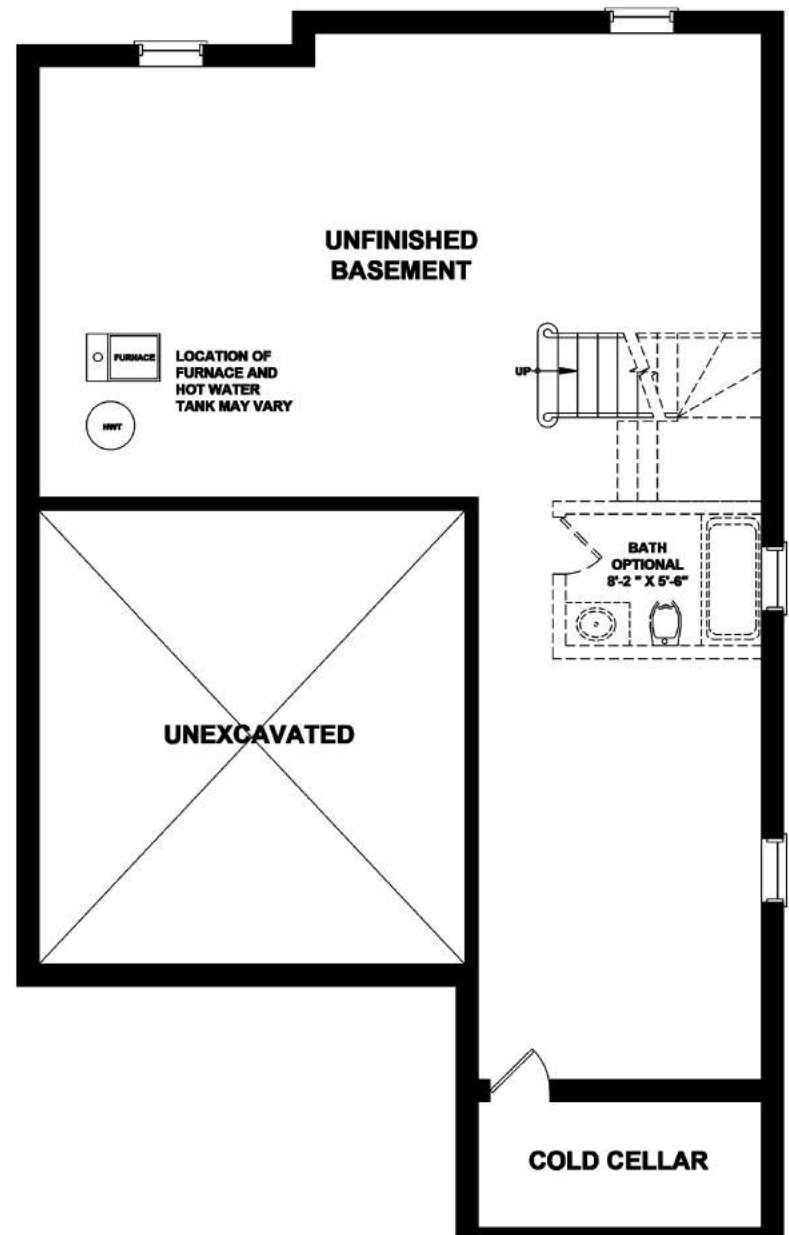


OPTION - B

GROUND FLOOR : 1012 sq.ft.



SECOND FLOOR : 1323 sq.ft.



BASEMENT

Notes:

- Base prices are subject to change.
- Prices include HST with rebate going to the builder.
- Prices do not include Lot Premiums on enlarged/pie shaped lots.
- The height of the main floor ceiling is 8'.
- **Elevation A** – Front elevation to have **brick** on first floor with **vinyl siding** on the 2nd floor. Side and back elevations to be all **vinyl siding**.
- **Elevation B** – Front elevation to have **4' stone skirt** with balance to be **brick** and/or **stucco**. Side and back elevations to be all **vinyl siding**.
- **Elevation C** – Front elevation to have **4' stone skirt** with balance to be **brick** and/or **stucco**. Side and back elevations to include **4' brick skirt** with the balance to be **vinyl siding**.

*All dimensions are approximate. Sizes and specifications are subject to change without notice. E. & O. E. All illustrations are artist's concept. Actual usable floor space varies from the stated floor area.



THE SAVANNAH ELEVATION `A`

2336 SQ.FT.

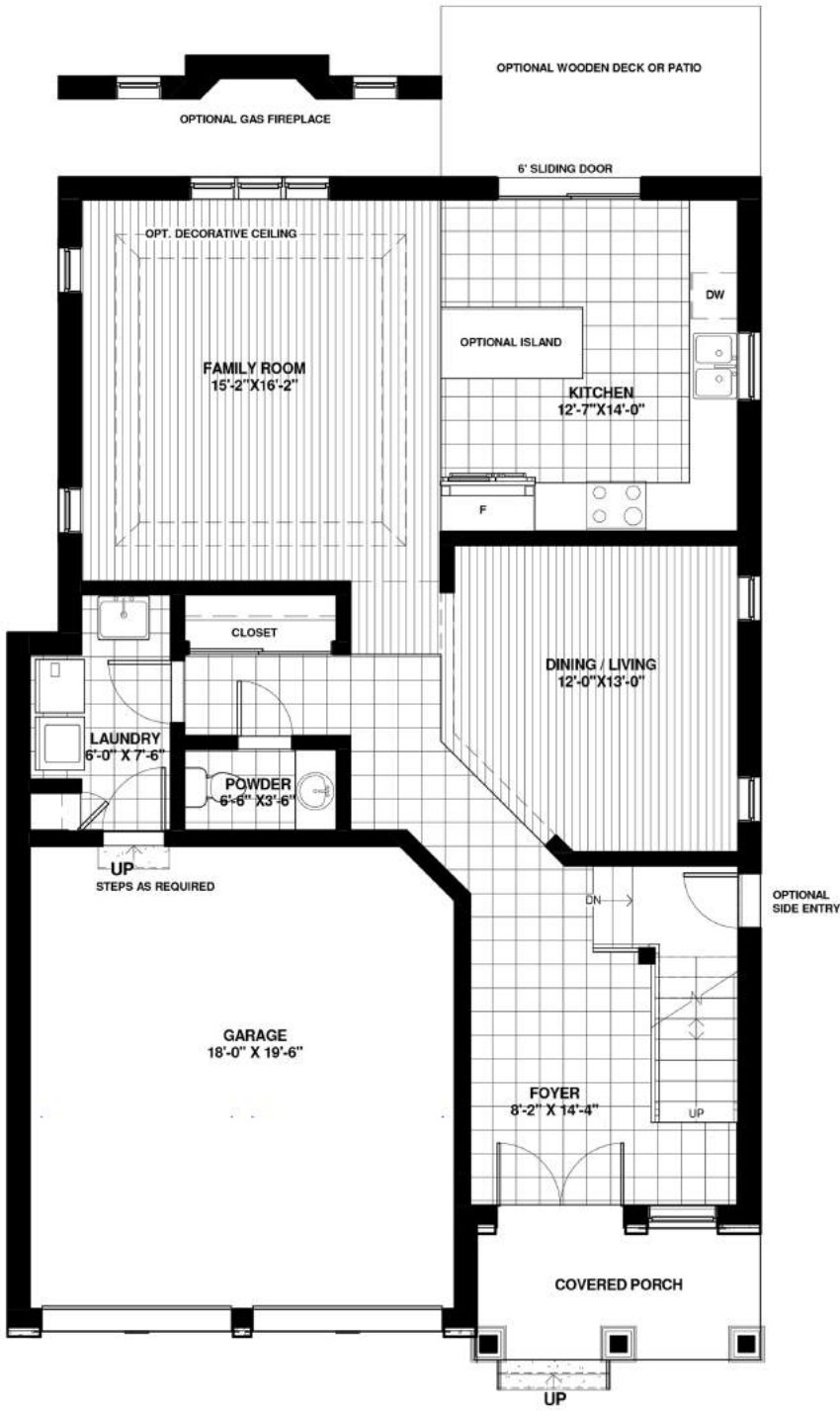


THE SAVANNAH ELEVATION `B`

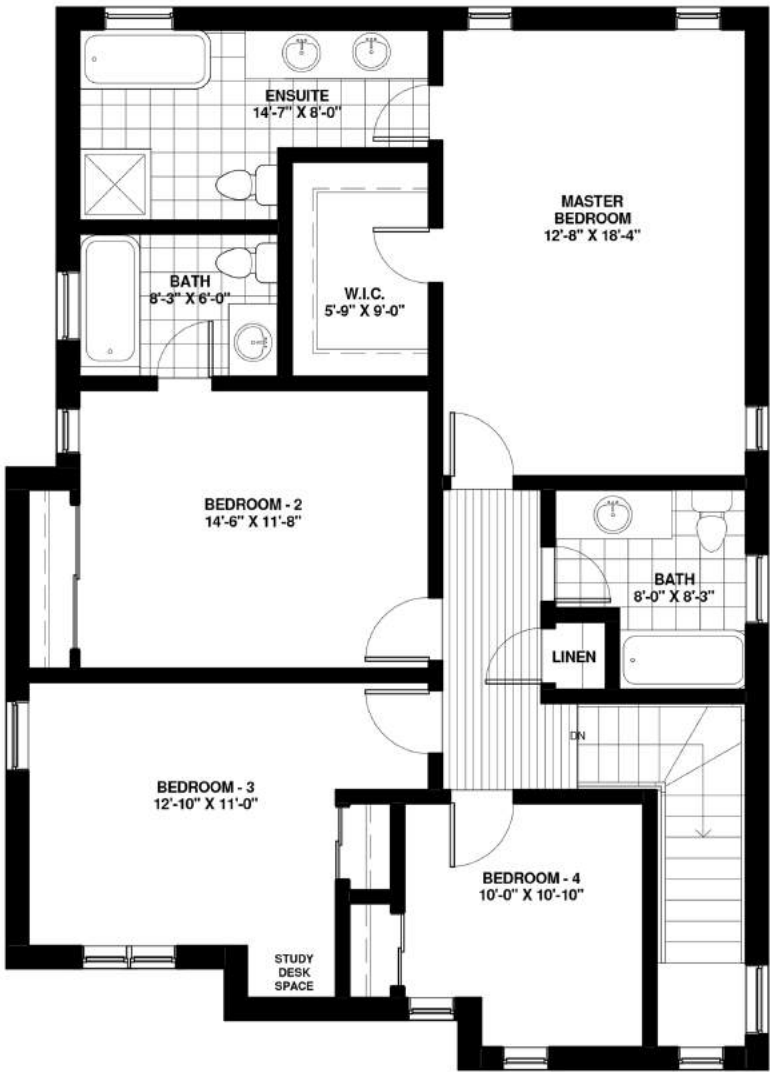
2336 SQ.FT.

THE SAVANNAH ELEVATION `C`

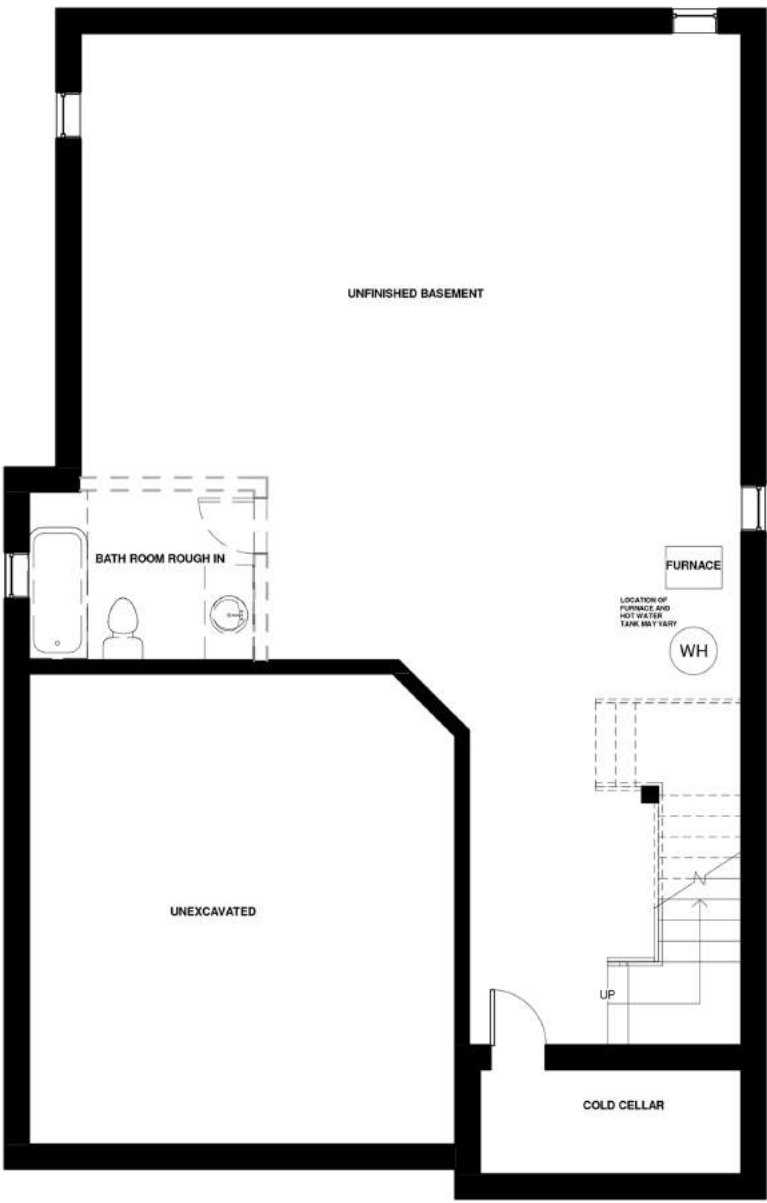
2336 SQ.FT.



GROUND FLOOR : 1068 sq.ft.



SECOND FLOOR : 1268 sq.ft.



BASEMENT

- Notes:**
- Base prices are subject to change.
 - Prices include HST with rebate going to the builder.
 - Prices do not include Lot Premiums on enlarged/pie shaped lots.
 - The height of the main floor ceiling is 8'.
 - **Elevation A** – Front elevation to have **brick** on first floor with **vinyl siding** on the 2nd floor. Side and back elevations to be all **vinyl siding**.
 - **Elevation B** – Front elevation to have **4' brick skirt** with balance to be **brick** and/or **stucco**. Side and back elevations to be all **vinyl siding**.
 - **Elevation C** – Front elevation to have **4' brick skirt** with balance to be **brick** and/or **stucco**. Side and back elevations to include **4' brick skirt** with the balance to be **vinyl siding**.

*All dimensions are approximate. Sizes and specifications are subject to change without notice. E. & O. E. All illustrations are artist's concept. Actual usable floor space varies from the stated floor area.



THE AURORA ELEVATION `A`

2240 SQ.FT.



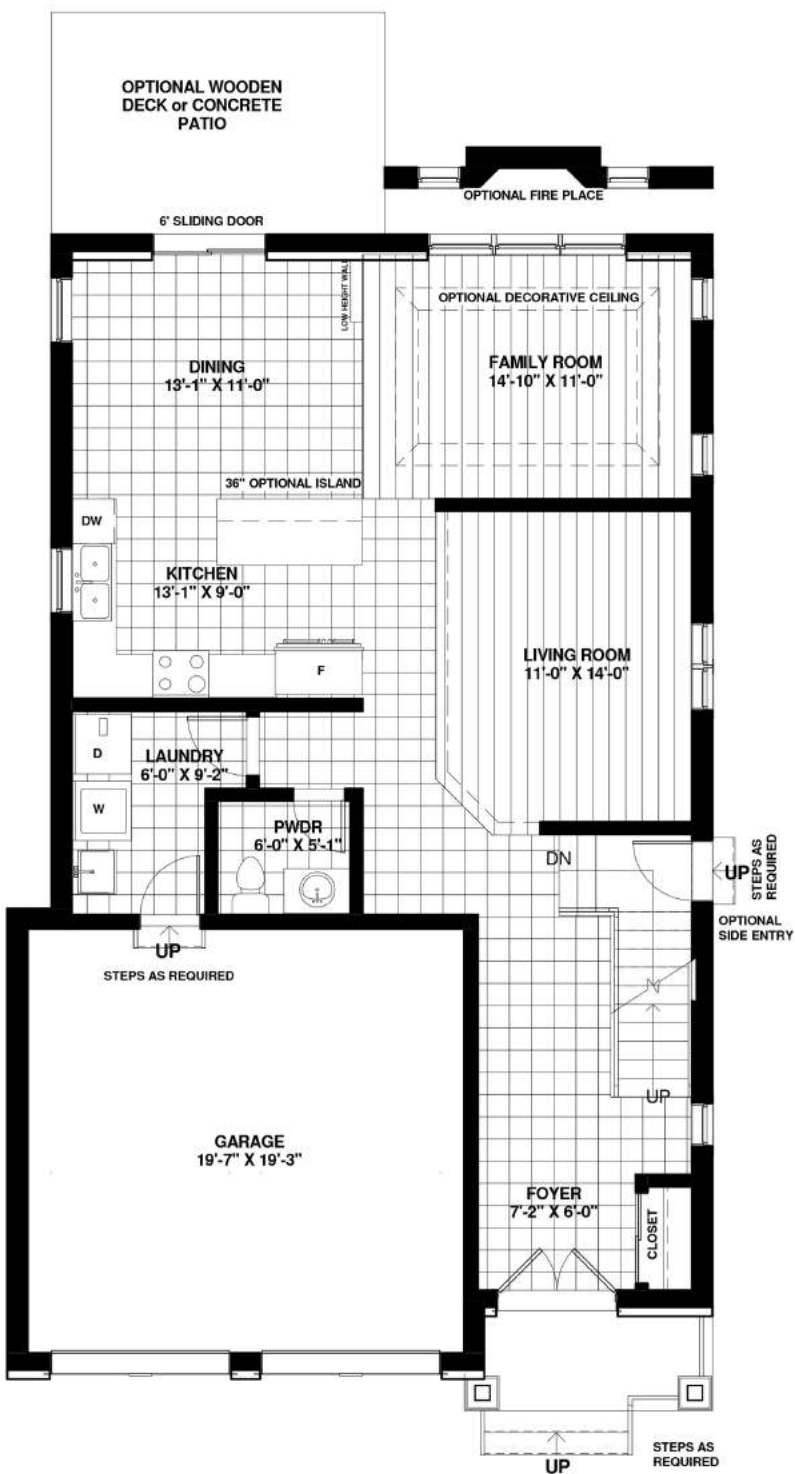
THE AURORA ELEVATION `B`

2240 SQ.FT.

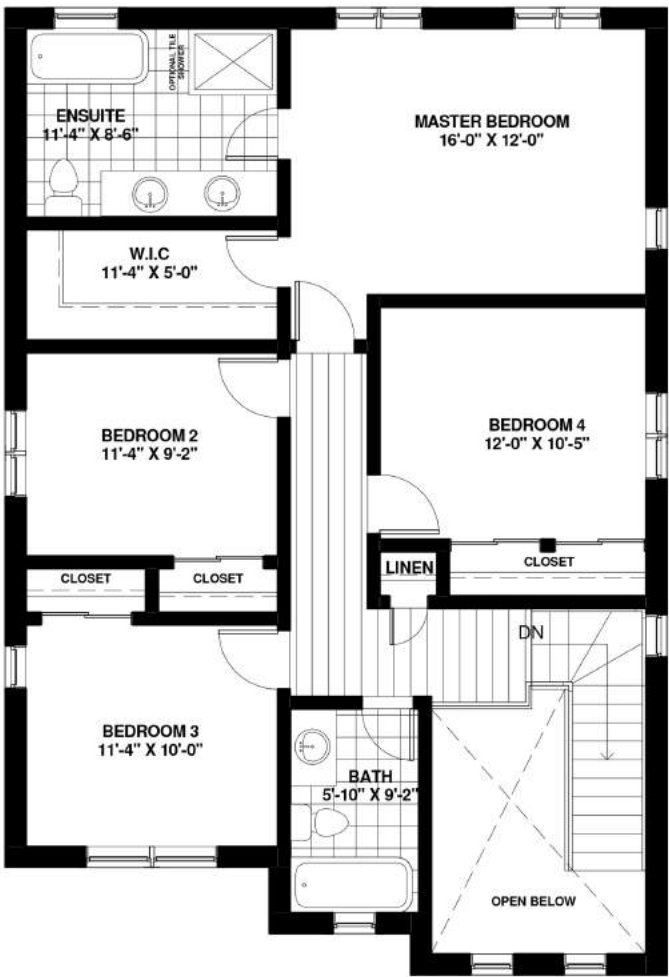
THE AURORA ELEVATION `C`

2240 SQ.FT.

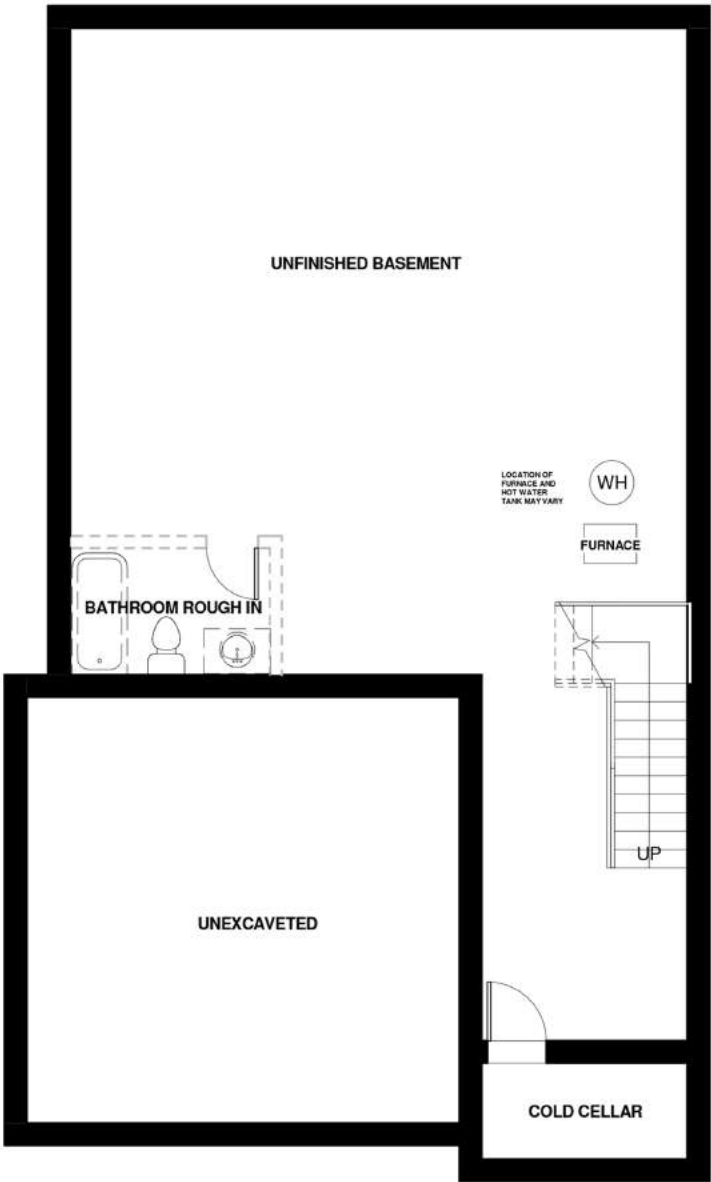
*All dimensions are approximate. Sizes and specifications are subject to change without notice. E. & O. E. All illustrations are artist's concept. Actual usable floor space varies from the stated floor area.



GROUND FLOOR : 1110 sq.ft.



SECOND FLOOR : 1130 sq.ft.



BASEMENT

Notes:

- Base prices are subject to change.
- Prices include HST with rebate going to the builder.
- Prices do not include Lot Premiums on enlarged/pie shaped lots.
- The height of the main floor ceiling is 8'.
- **Elevation A** – Front elevation to have **brick** on first floor with **vinyl siding** on the 2nd floor. Side and back elevations to be all **vinyl siding**.
- **Elevation B** – Front elevation to have **4' stone skirt** with balance to be **brick** and/or **stucco**. Side and back elevations to be all **vinyl siding**.
- **Elevation C** – Front elevation to have **4' stone skirt** with balance to be **brick** and/or **stucco**. Side and back elevations to include **4' brick skirt** with the balance to be **vinyl siding**.

*All dimensions are approximate. Sizes and specifications are subject to change without notice. E. & O. E. All illustrations are artist's concept. Actual usable floor space varies from the stated floor area.



ARTIST'S CONCEPT*

THE KINGSTON ELEVATION `A`

2313 SQ.FT.



ARTIST'S CONCEPT*

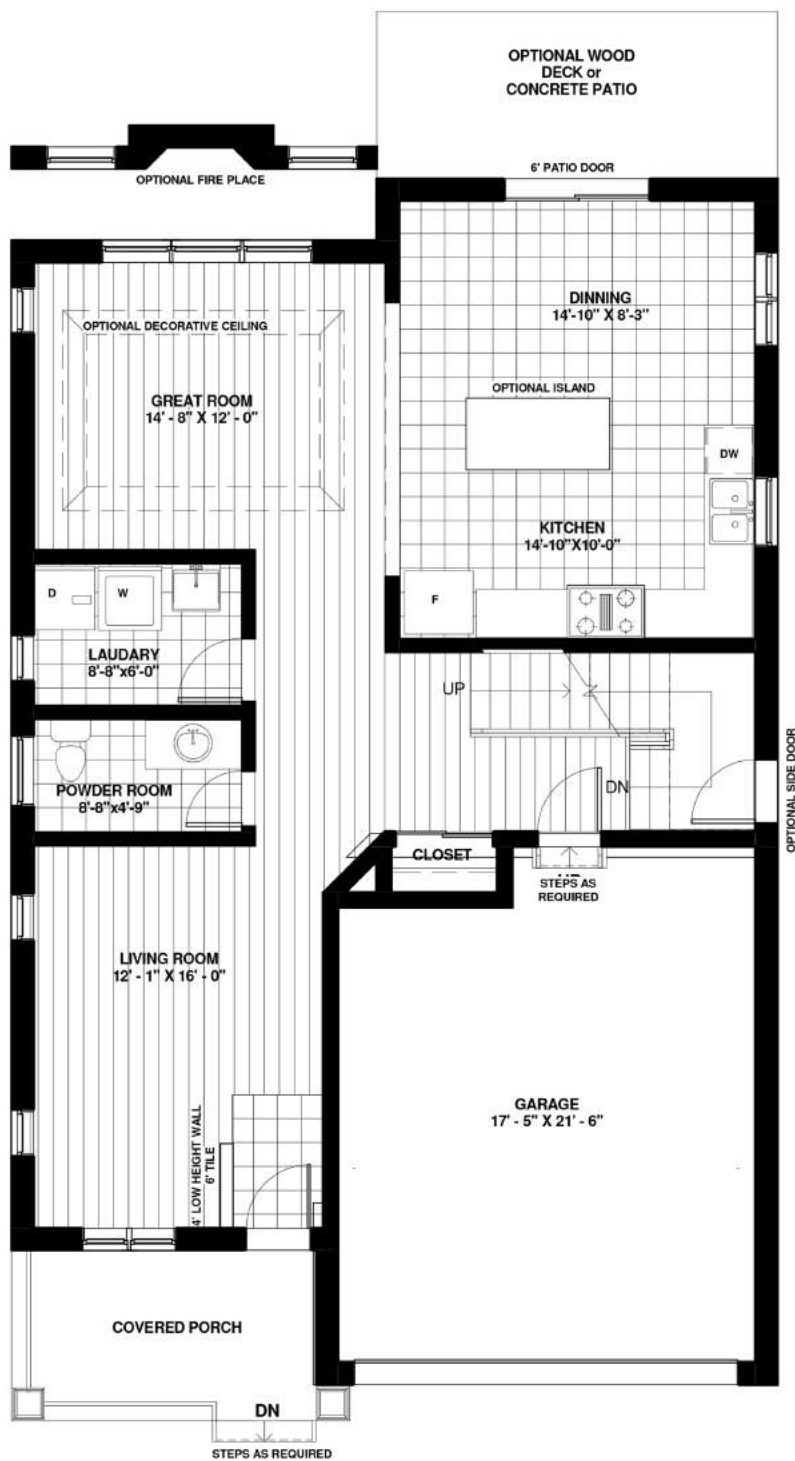
THE KINGSTON ELEVATION `B`

2313 SQ.FT.

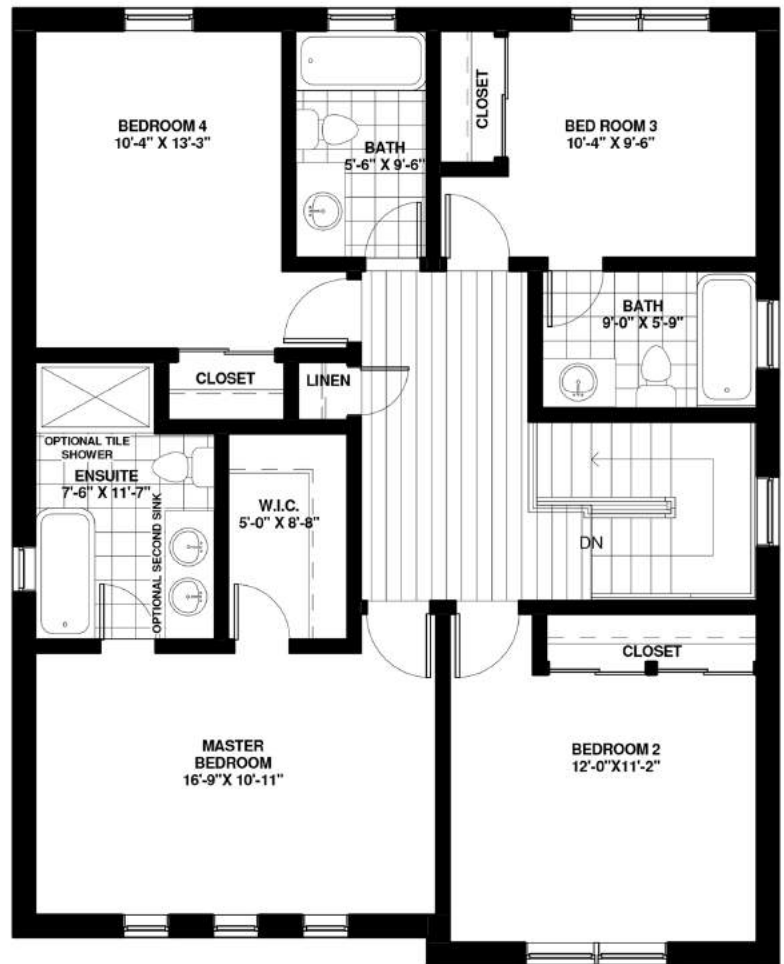
THE KINGSTON ELEVATION `C`

2313 SQ.FT.

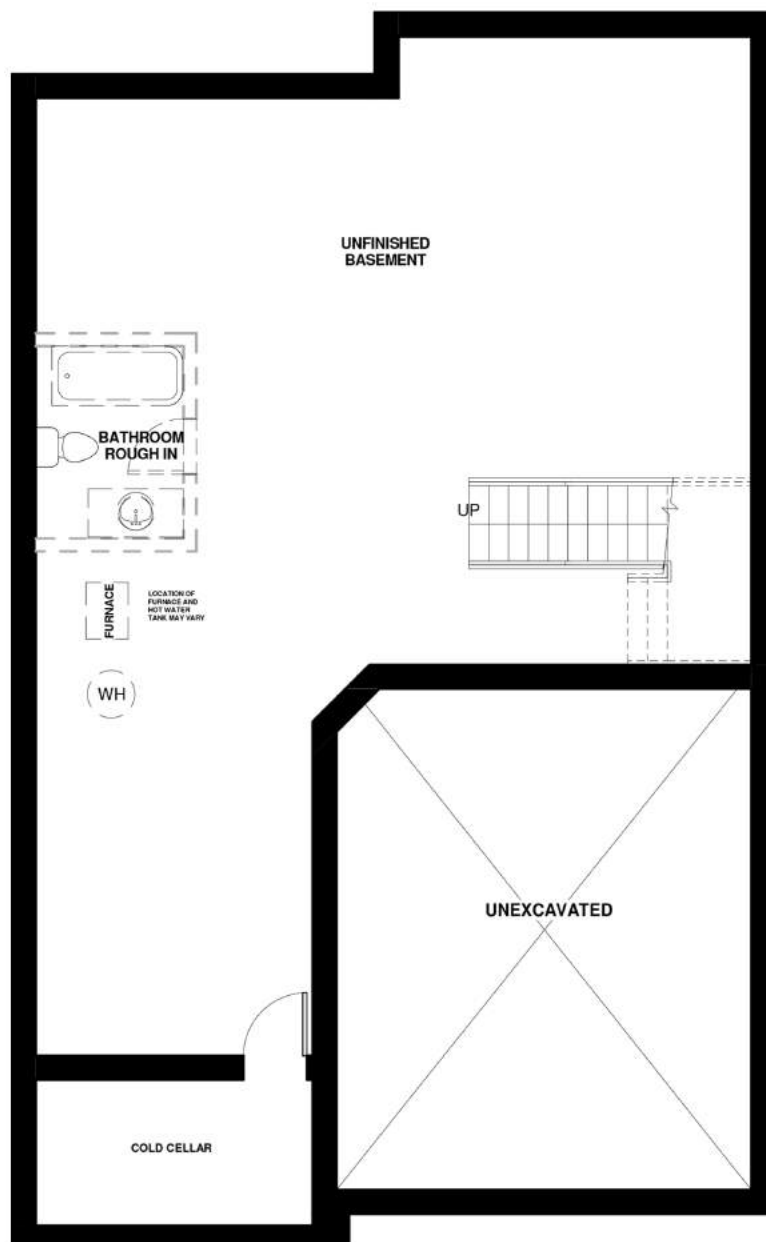
*All dimensions are approximate. Sizes and specifications are subject to change without notice. E. & O. E. All illustrations are artist's concept. Actual usable floor space varies from the stated floor area.



GROUND FLOOR : 1055 sq.ft.



SECOND FLOOR : 1258 sq.ft.



BASEMENT

Notes:

- Base prices are subject to change.
- Prices include HST with rebate going to the builder.
- Prices do not include Lot Premiums on enlarged/pie shaped lots.
- The height of the main floor ceiling is 8'.
- **Elevation A** – Front elevation to have **brick** on first floor with **vinyl siding** on the 2nd floor. Side and back elevations to be all **vinyl siding**.
- **Elevation B** – Front elevation to have **4' brick skirt** with balance to be **brick** and/or **stucco**. Side and back elevations to be all **vinyl siding**.
- **Elevation C** – Front elevation to have **4' brick skirt** with balance to be **brick** and/or **stucco**. Side and back elevations to include **4' brick skirt** with the balance to be **vinyl siding**.

*All dimensions are approximate. Sizes and specifications are subject to change without notice. E. & O. E. All illustrations are artist's concept. Actual usable floor space varies from the stated floor area.



ARTIST'S CONCEPT*

THE ARLINGTON ELEVATION 'A'

2279 SQ.FT.



ARTIST'S CONCEPT*

THE ARLINGTON ELEVATION 'B'

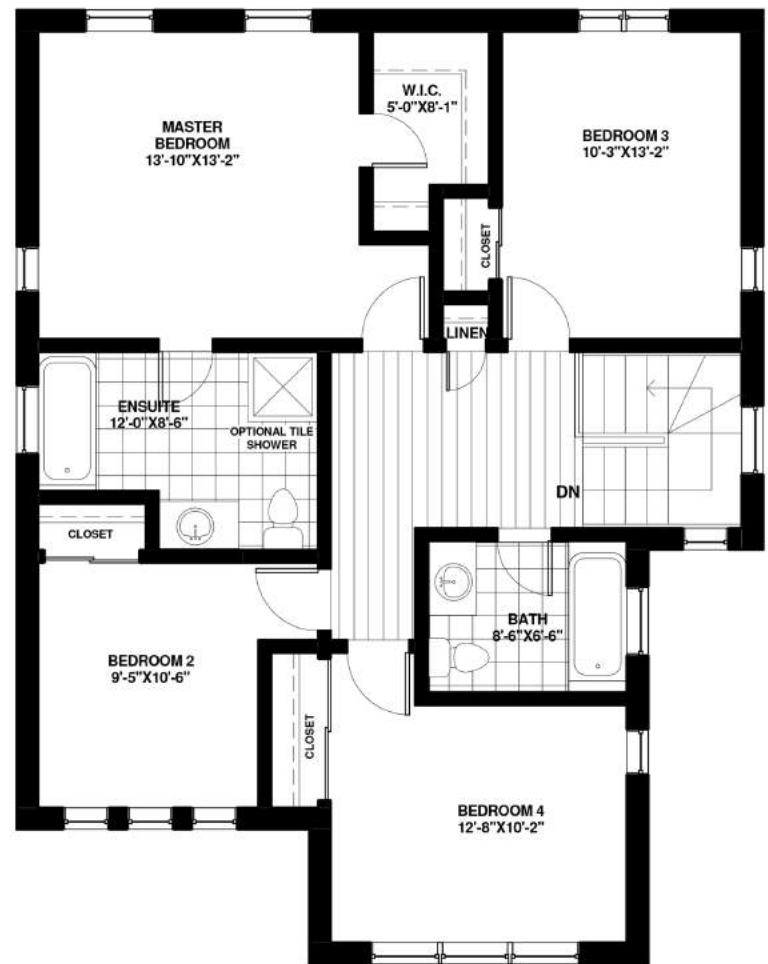
2279 SQ.FT.

THE ARLINGTON ELEVATION 'C'

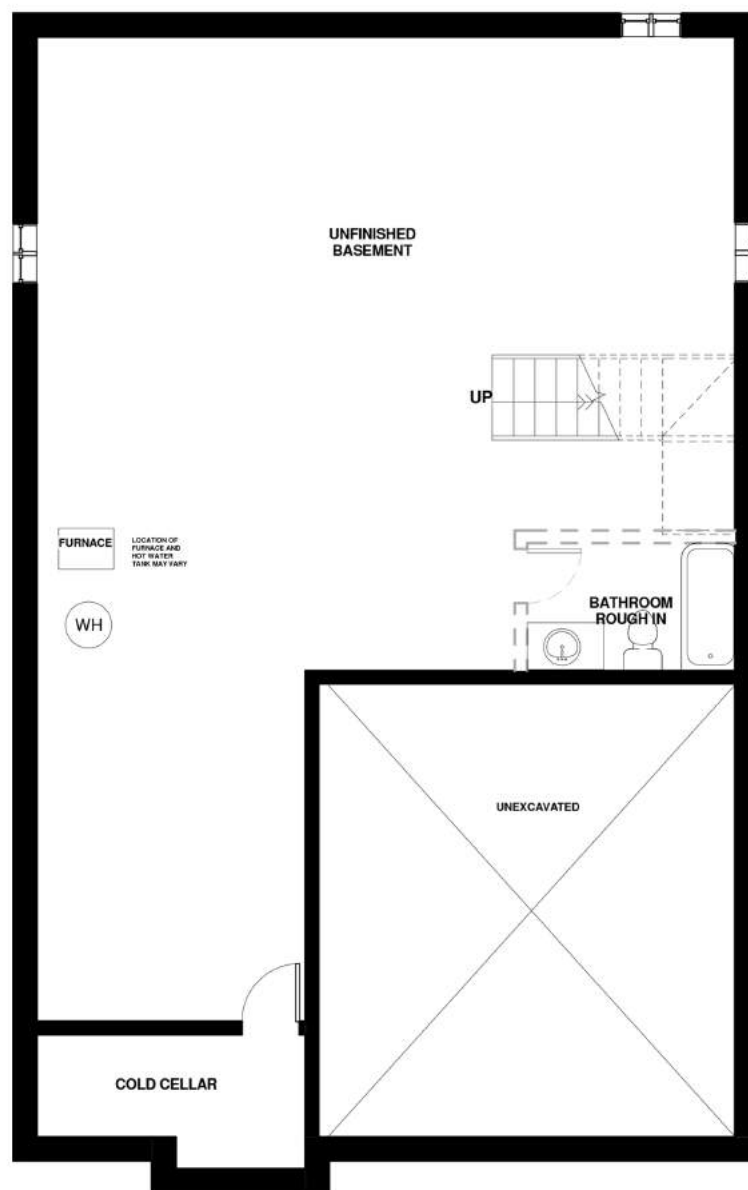
2279 SQ.FT.



GROUND FLOOR : 1131 sq.ft.



SECOND FLOOR AREA 1148 SQFT.
TOTAL: 2279 SQFT.



BASEMENT

Notes:

- Base prices are subject to change.
- Prices include HST with rebate going to the builder.
- Prices do not include Lot Premiums on enlarged/pie shaped lots.
- The height of the main floor ceiling is 8'.
- **Elevation A** – Front elevation to have **brick** on first floor with **vinyl siding** on the 2nd floor. Side and back elevations to be all **vinyl siding**.
- **Elevation B** – Front elevation to have **4' stone skirt** with balance to be **brick** and/or **stucco**. Side and back elevations to be all **vinyl siding**.
- **Elevation C** – Front elevation to have **4' stone skirt** with balance to be **brick** and/or **stucco**. Side and back elevations to include **4' brick skirt** with the balance to be **vinyl siding**.

*All dimensions are approximate. Sizes and specifications are subject to change without notice. E. & O. E. All illustrations are artist's concept. Actual usable floor space varies from the stated floor area.



ARTIST'S CONCEPT*

THE CAMBRIDGE ELEVATION 'A'

2320 SQ.FT.



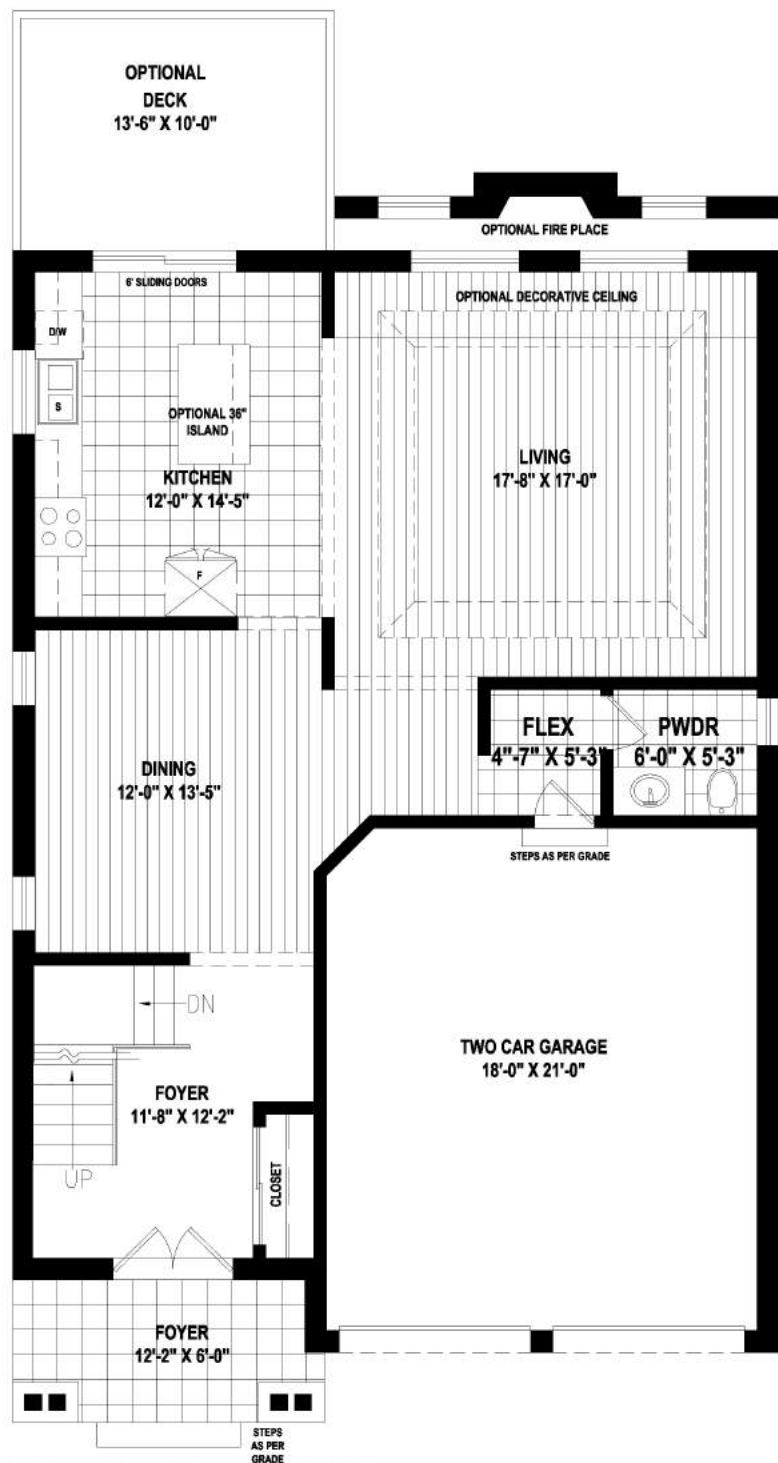
ARTIST'S CONCEPT*

THE CAMBRIDGE ELEVATION 'B'

2320 SQ.FT.

THE CAMBRIDGE ELEVATION 'C'

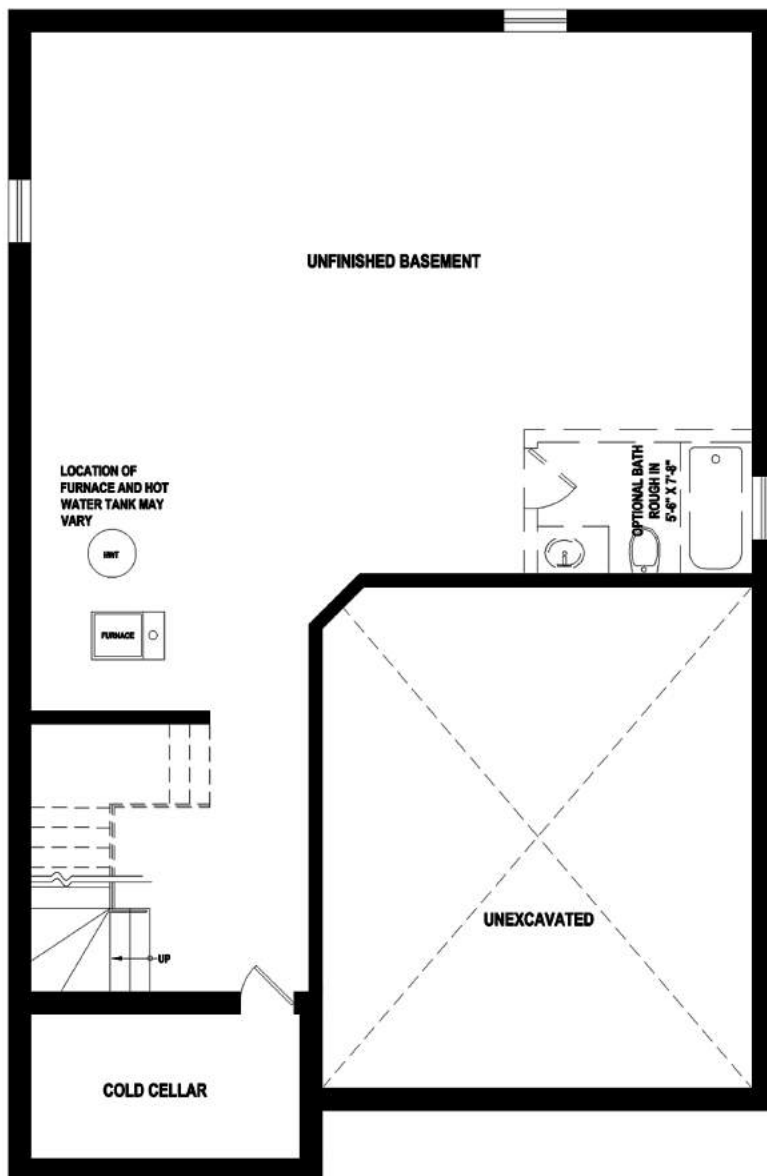
2320 SQ.FT.



GROUND FLOOR : 1024 sq.ft.



SECOND FLOOR : 1296 sq.ft.



BASEMENT

Notes:

- Base prices are subject to change.
- Prices include HST with rebate going to the builder.
- Prices do not include Lot Premiums on enlarged/pie shaped lots.
- The height of the main floor ceiling is 8'.
- **Elevation A** – Front elevation to have **brick** on first floor with **vinyl siding** on the 2nd floor. Side and back elevations to be all **vinyl siding**.
- **Elevation B** – Front elevation to have **4' stone skirt** with balance to be **brick** and/or **stucco**. Side and back elevations to be all **vinyl siding**.
- **Elevation C** – Front elevation to have **4' stone skirt** with balance to be **brick** and/or **stucco**. Side and back elevations to include **4' brick skirt** with the balance to be **vinyl siding**.

*All dimensions are approximate. Sizes and specifications are subject to change without notice. E. & O. E. All illustrations are artist's concept. Actual usable floor space varies from the stated floor area.



ARTIST'S CONCEPT*

THE SONOMA ELEVATION 'A'

3124 SQ.FT.



ARTIST'S CONCEPT*

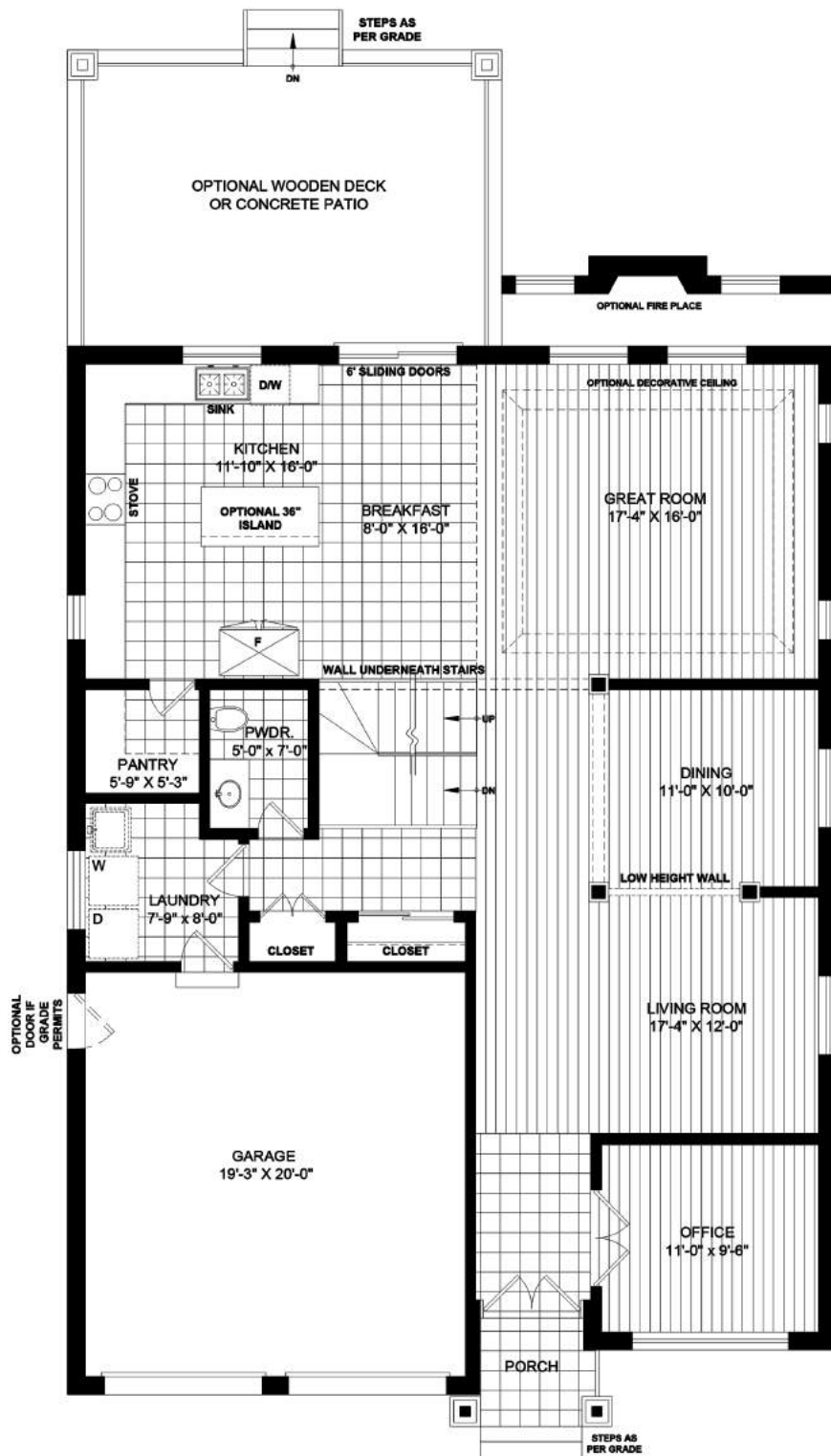
THE SONOMA ELEVATION 'B'

3124 SQ.FT.

THE SONOMA ELEVATION 'C'

3124 SQ.FT.

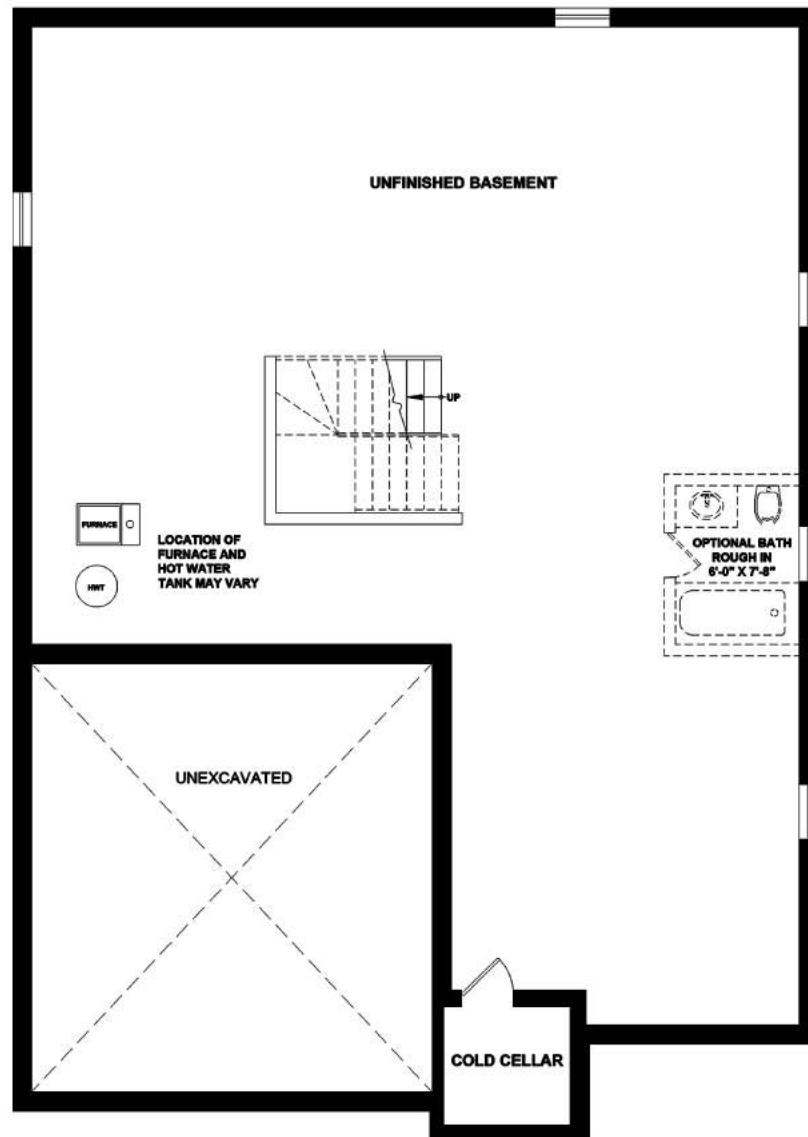
*All dimensions are approximate. Sizes and specifications are subject to change without notice. E. & O. E. All illustrations are artist's concept. Actual usable floor space varies from the stated floor area.



GROUND FLOOR : 1589 sq.ft.



SECOND FLOOR : 1535 sq.ft.



BASEMENT

Notes:

- Base prices are subject to change.
- Prices include HST with rebate going to the builder.
- Prices do not include Lot Premiums on enlarged/pie shaped lots.
- The height of the main floor ceiling is 8'.
- **Elevation A** – Front elevation to have **brick** on first floor with **vinyl siding** on the 2nd floor. Side and back elevations to be all **vinyl siding**.
- **Elevation B** – Front elevation to have **4' stone skirt** with balance to be **brick** and/or **stucco**. Side and back elevations to be all **vinyl siding**.
- **Elevation C** – Front elevation to have **4' stone skirt** with balance to be **brick** and/or **stucco**. Side and back elevations to include **4' brick skirt** with the balance to be **vinyl siding**.

*All dimensions are approximate. Sizes and specifications are subject to change without notice. E. & O. E. All illustrations are artist's concept. Actual usable floor space varies from the stated floor area.



ARTIST'S CONCEPT*

THE BEL AIR ELEVATION `A`

3855 SQ.FT.



ARTIST'S CONCEPT*

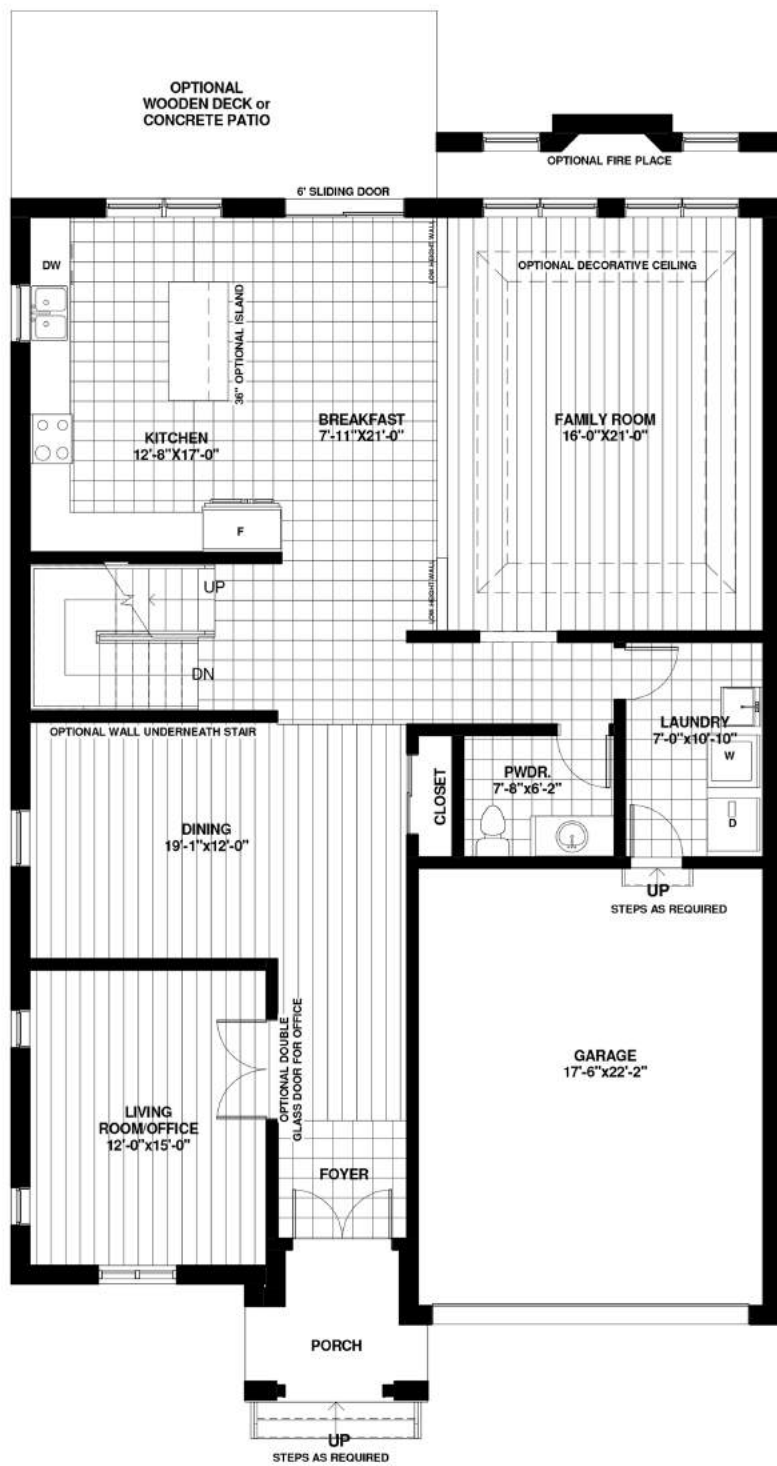
THE BEL AIR ELEVATION `B`

3855 SQ.FT.

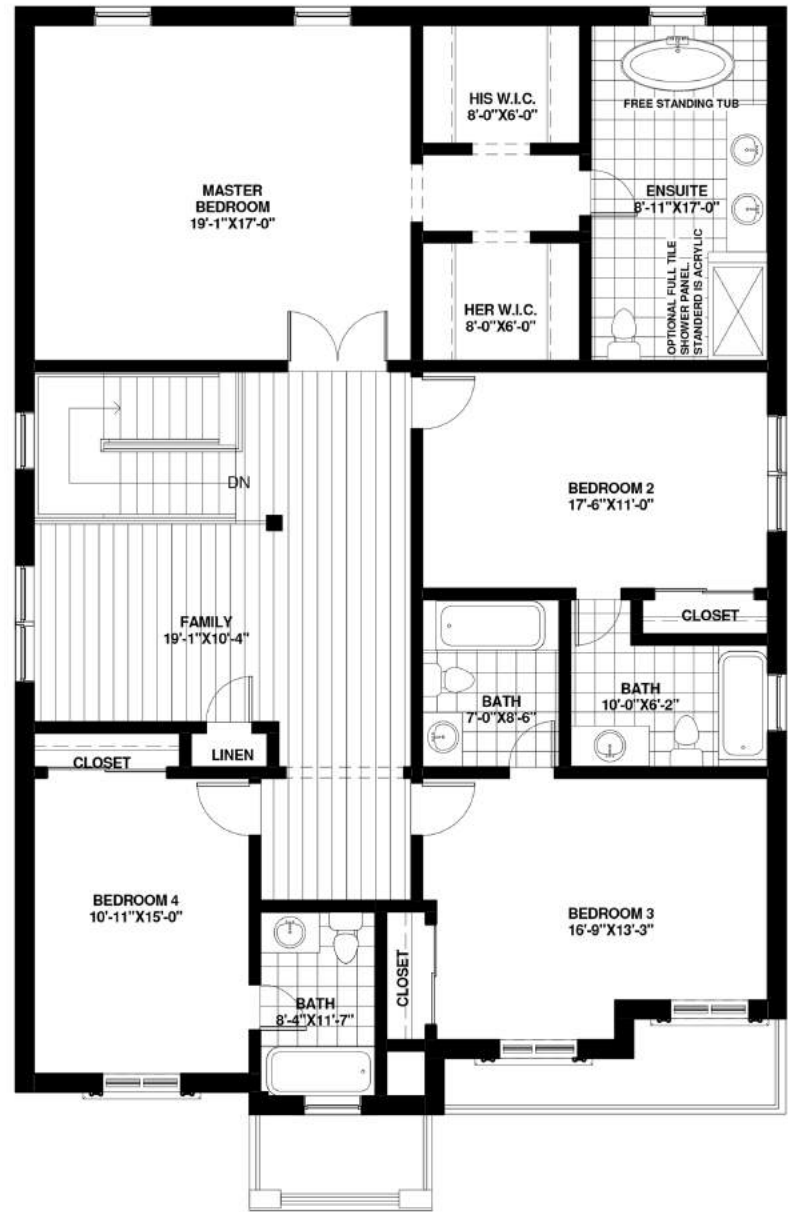
THE BEL AIR ELEVATION `C`

3855 SQ.FT.

*All dimensions are approximate. Sizes and specifications are subject to change without notice. E. & O. E. All illustrations are artist's concept. Actual usable floor space varies from the stated floor area.



GROUND FLOOR : 1746 sq.ft.

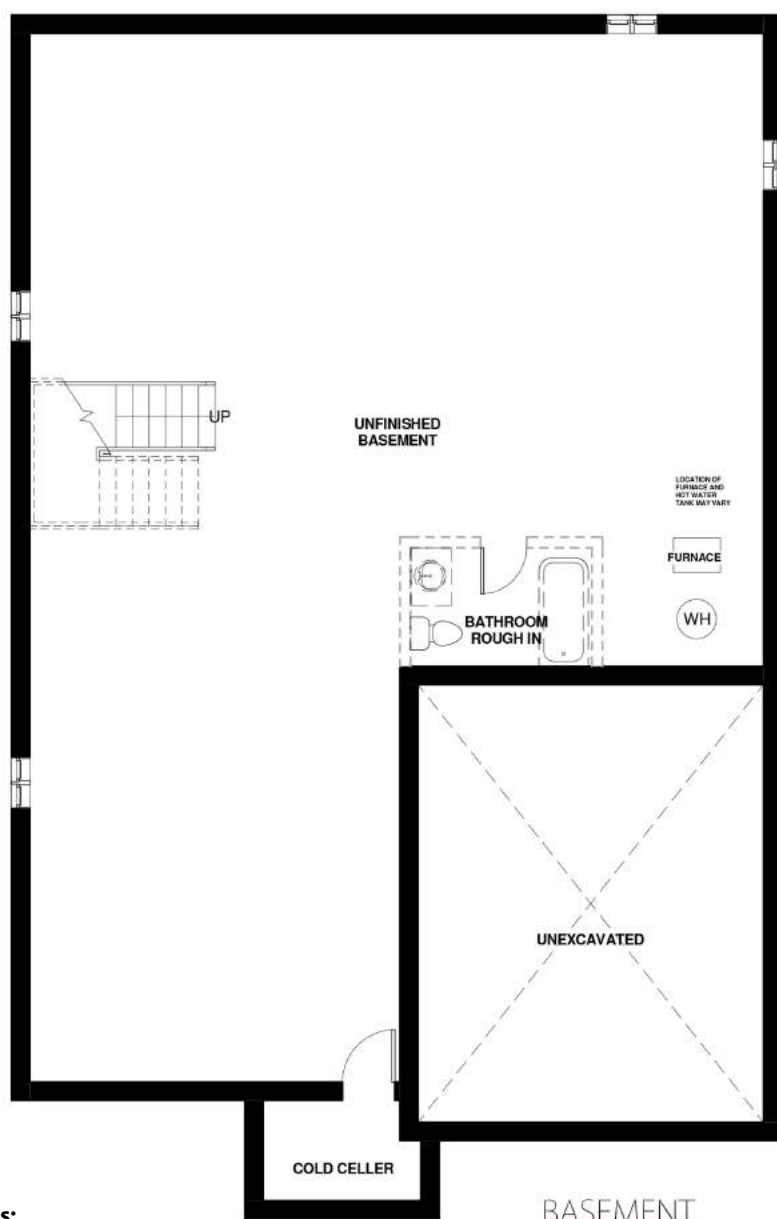


OPTION : A



OPTION : B

SECOND FLOOR : 2109 sq.ft.



BASEMENT

Notes:

- Base prices are subject to change.
- Prices include HST with rebate going to the builder.
- Prices do not include Lot Premiums on enlarged/pie shaped lots.
- The height of the main floor ceiling is 8'.
- **Elevation A** – Front elevation to have **stone & stucco** on first floor and **stucco** on the 2nd floor. Side and back elevations to be all **vinyl siding**.
- **Elevation B** – Front elevation to have **stone & stucco** on first floor and **stucco** on the 2nd floor. Side and back elevations to be all **vinyl siding**.
- **Elevation C** – Front elevation to have **stone & stucco** on first floor and **stucco** on the 2nd floor. Side and back elevations to include **4' brick skirt** with the balance to be **vinyl siding**.

*All dimensions are approximate. Sizes and specifications are subject to change without notice. E. & O. E. All illustrations are artist's concept. Actual usable floor space varies from the stated floor area.



ARTIST'S CONCEPT*

THE ASTORIA ELEVATION `A`

3033 SQ.FT.



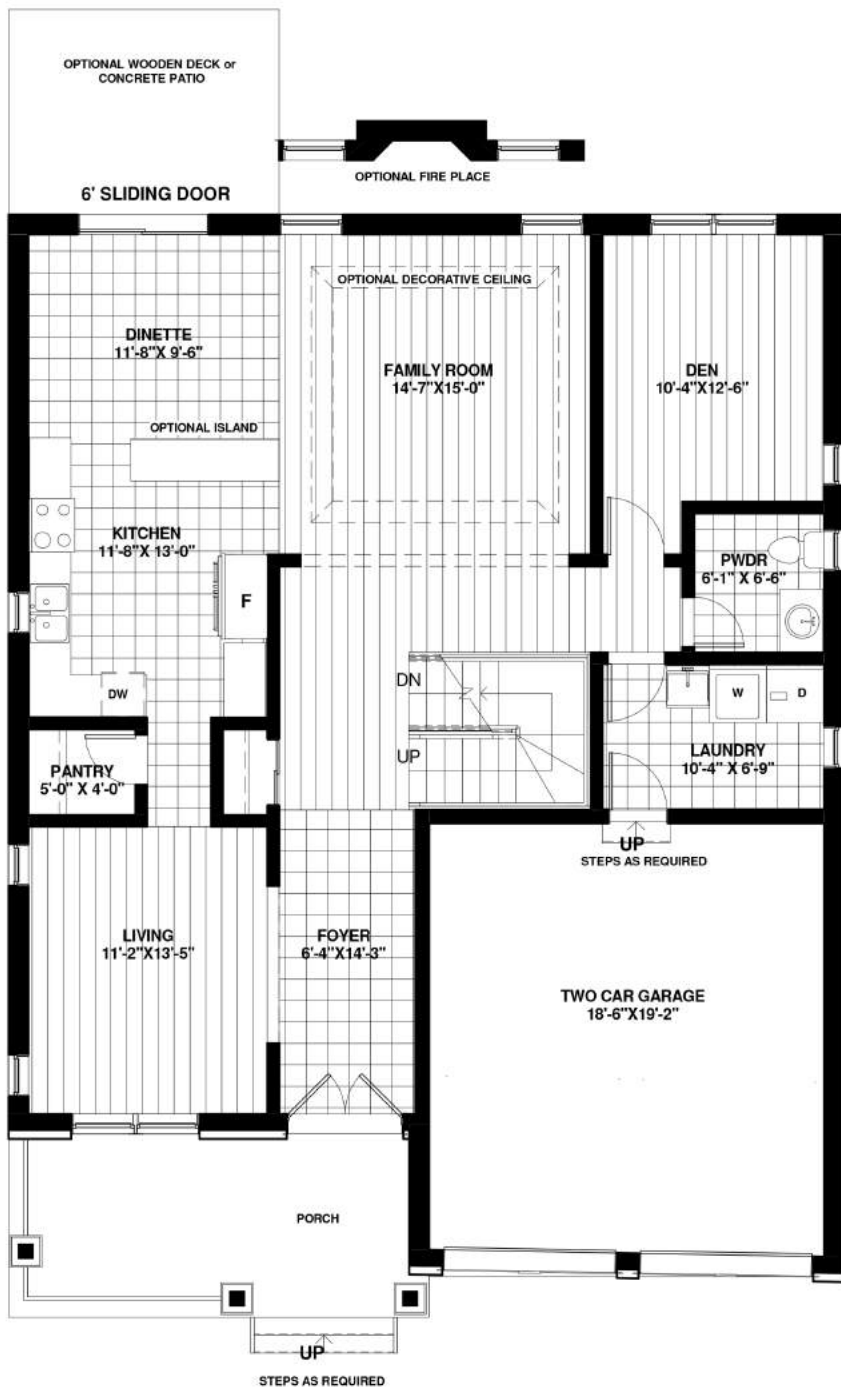
ARTIST'S CONCEPT*

THE ASTORIA ELEVATION `B`

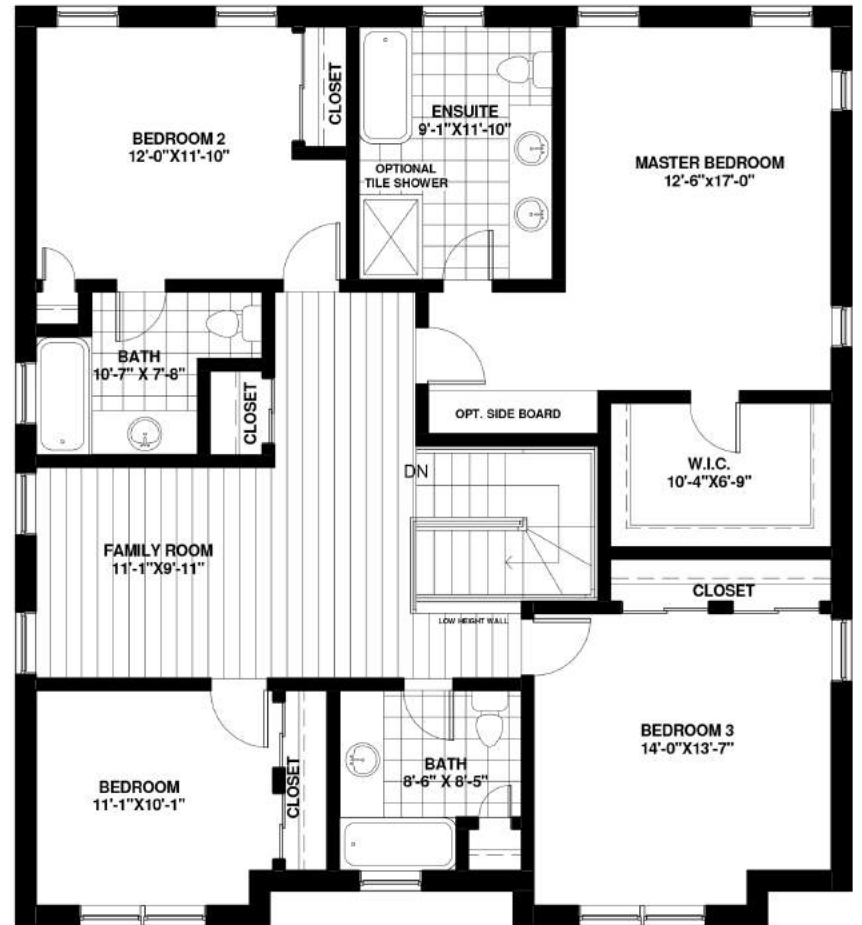
3033 SQ.FT.

THE ASTORIA ELEVATION `C`

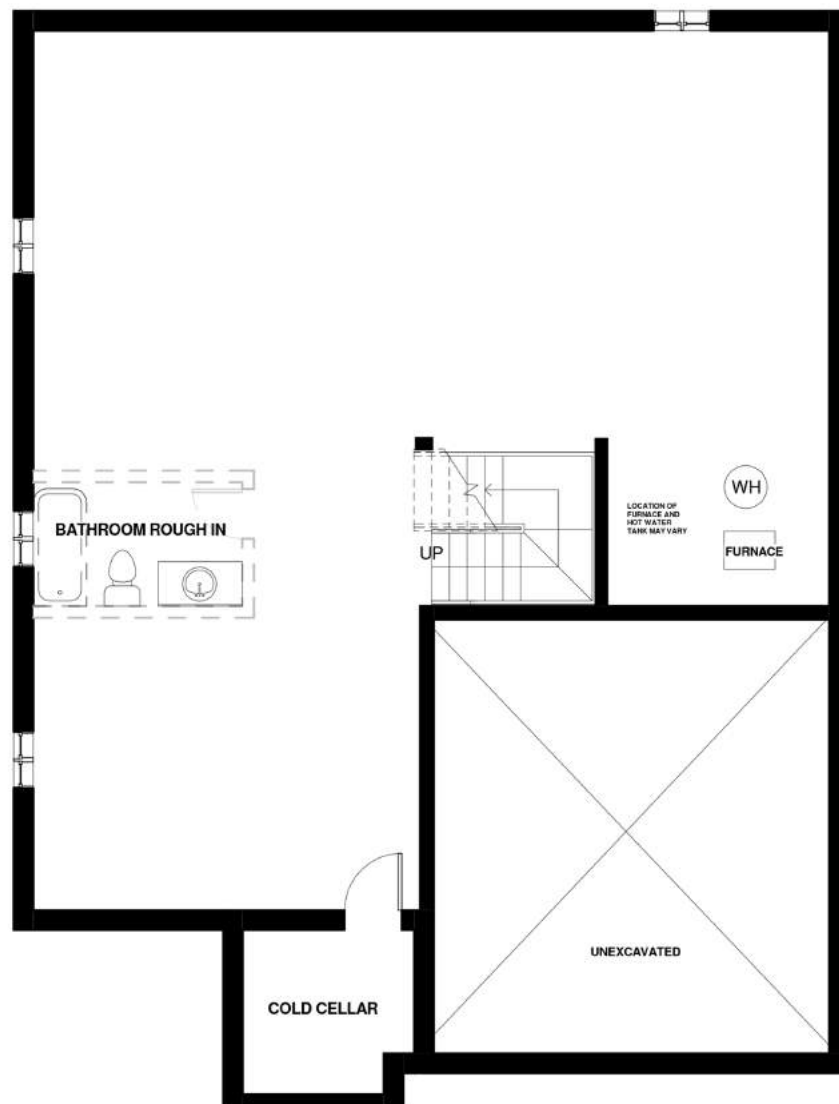
3033 SQ.FT.



GROUND FLOOR : 1384 sq.ft.



SECOND FLOOR : 1649 sq.ft.



BASEMENT

Notes:

- Base prices are subject to change.
- Prices include HST with rebate going to the builder.
- Prices do not include Lot Premiums on enlarged/pie shaped lots.
- The height of the main floor ceiling is 8'.
- **Elevation A** – Front elevation to have **stone** on first floor with **vinyl siding** on the 2nd floor. Side and back elevations to be all **vinyl siding**.
- **Elevation B** – Front elevation to have **4' stone skirt** with balance to be **stone** and/or **stucco**. Side and back elevations to be all **vinyl siding**.
- **Elevation C** – Front elevation to have **4' stone skirt** with balance to be **stone** and/or **stucco**. Side and back elevations to include **4' brick skirt** with the balance to be **vinyl siding**.

*All dimensions are approximate. Sizes and specifications are subject to change without notice. E. & O. E. All illustrations are artist's concept. Actual usable floor space varies from the stated floor area.



ARTIST'S CONCEPT*

THE OXFORD ELEVATION 'A'

2849 SQ.FT.



ARTIST'S CONCEPT*

THE OXFORD ELEVATION 'B'

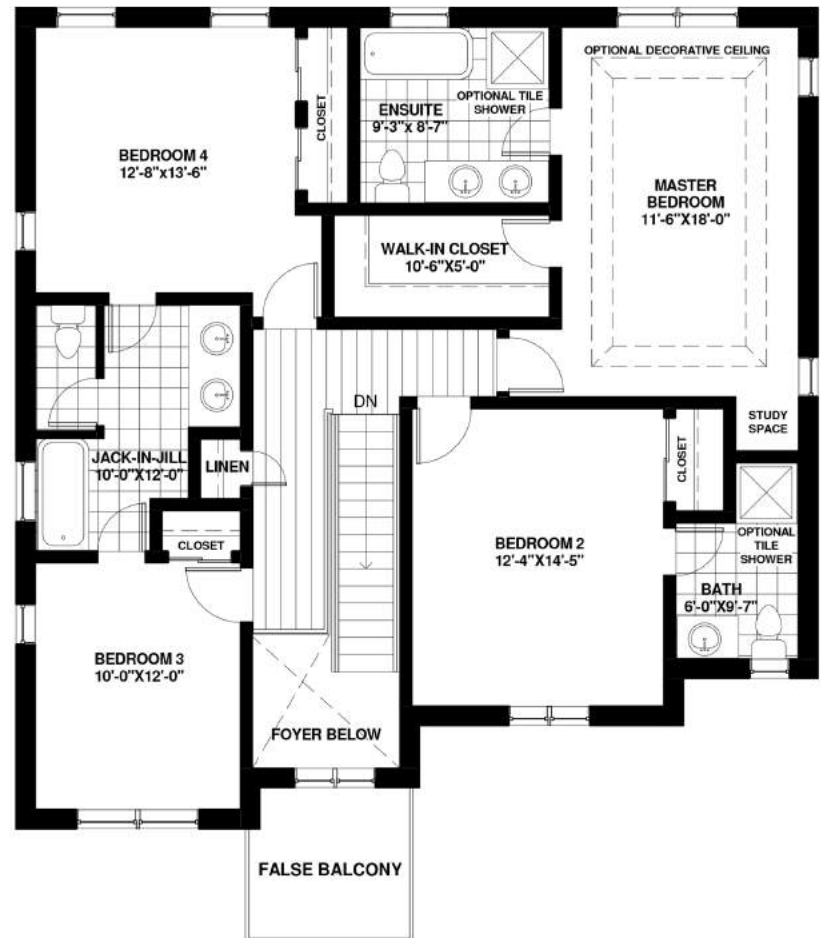
2849 SQ.FT.

THE OXFORD ELEVATION 'C'

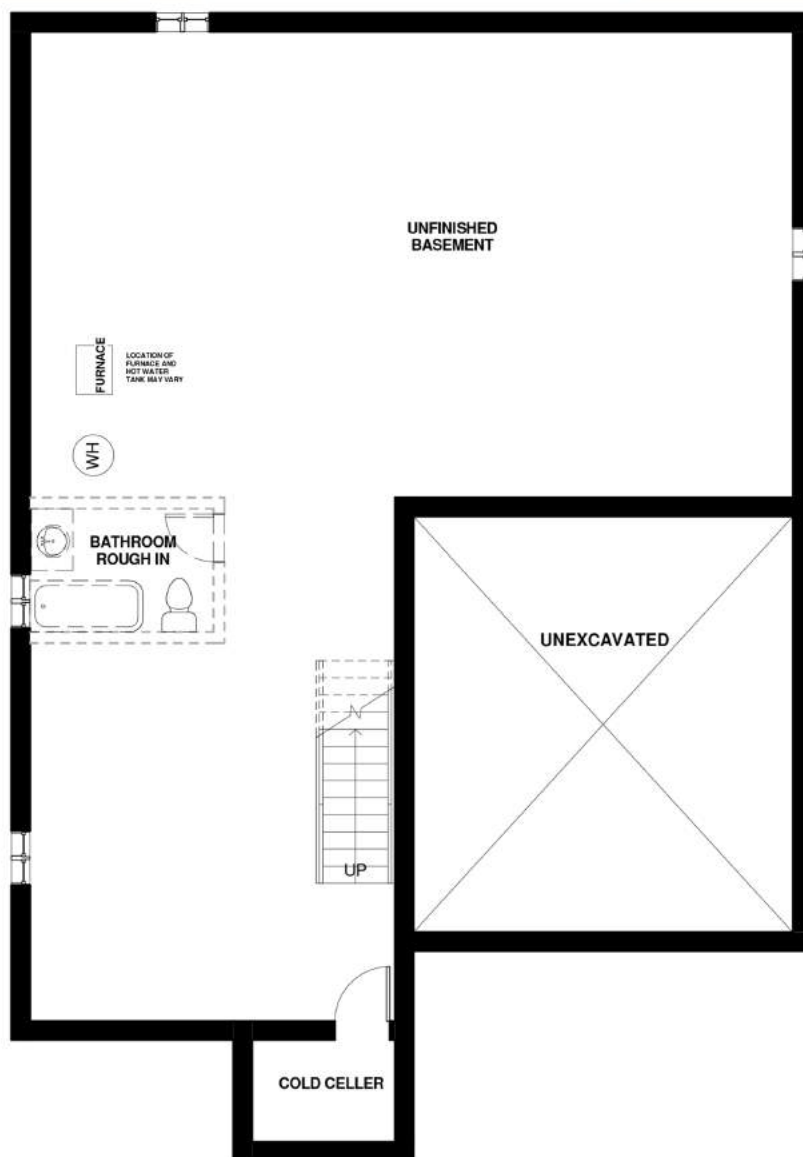
2849 SQ.FT.



GROUND FLOOR : 1464 sq.ft.



SECOND FLOOR : 1385 sq.ft.



BASEMENT

Notes:

- Base prices are subject to change.
- Prices include HST with rebate going to the builder.
- Prices do not include Lot Premiums on enlarged/pie shaped lots.
- The height of the main floor ceiling is 8'.
- **Elevation A** – Front elevation to have **stone** on first floor with **stucco** on the 2nd floor. Side and back elevations to be all **vinyl siding**.
- **Elevation B** – Front elevation to have **4' stone skirt** with balance to be **stone** and/or **stucco**. Side and back elevations to be all **vinyl siding**.
- **Elevation C** – Front elevation to have **4' stone skirt** with balance to be **stone** and/or **stucco**. Side and back elevations to include **4' brick skirt** with the balance to be **vinyl siding**.

*All dimensions are approximate. Sizes and specifications are subject to change without notice. E. & O. E. All illustrations are artist's concept. Actual usable floor space varies from the stated floor area.