



ARTIST'S CONCEPT*

THE NIVAAS VILLA ELEVATION `A`

2406 SQ.FT.



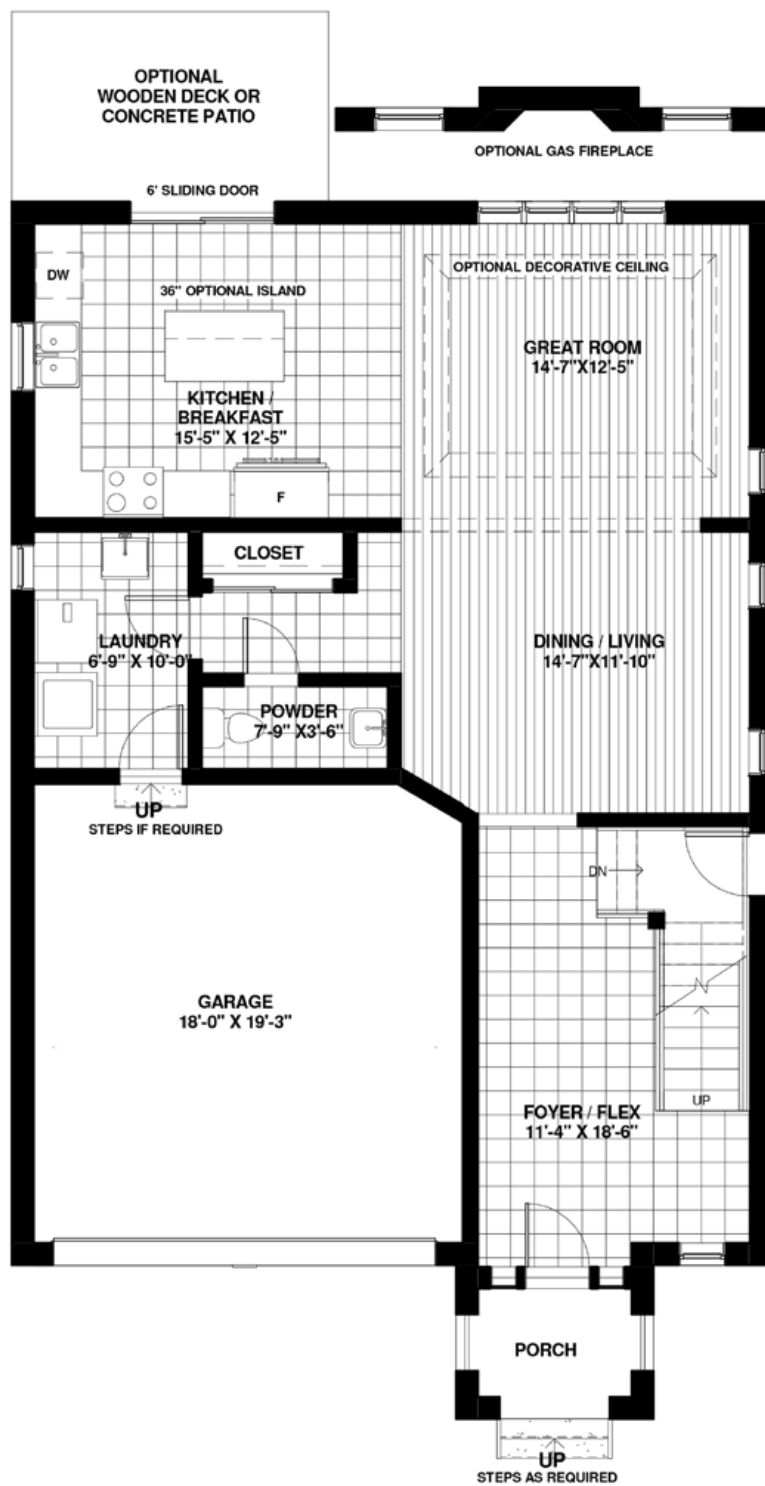
ARTIST'S CONCEPT*

THE NIVAAS VILLA ELEVATION `B`

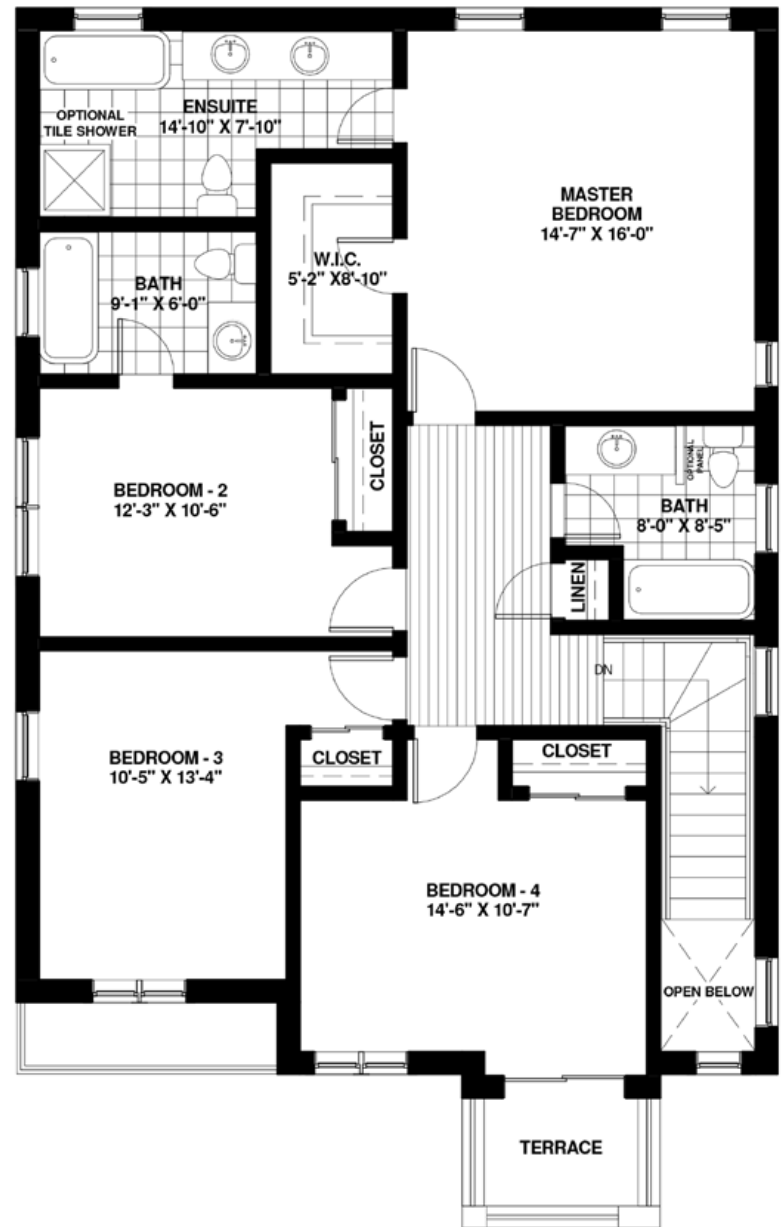
2406 SQ.FT.

THE NIVAAS VILLA ELEVATION `C`

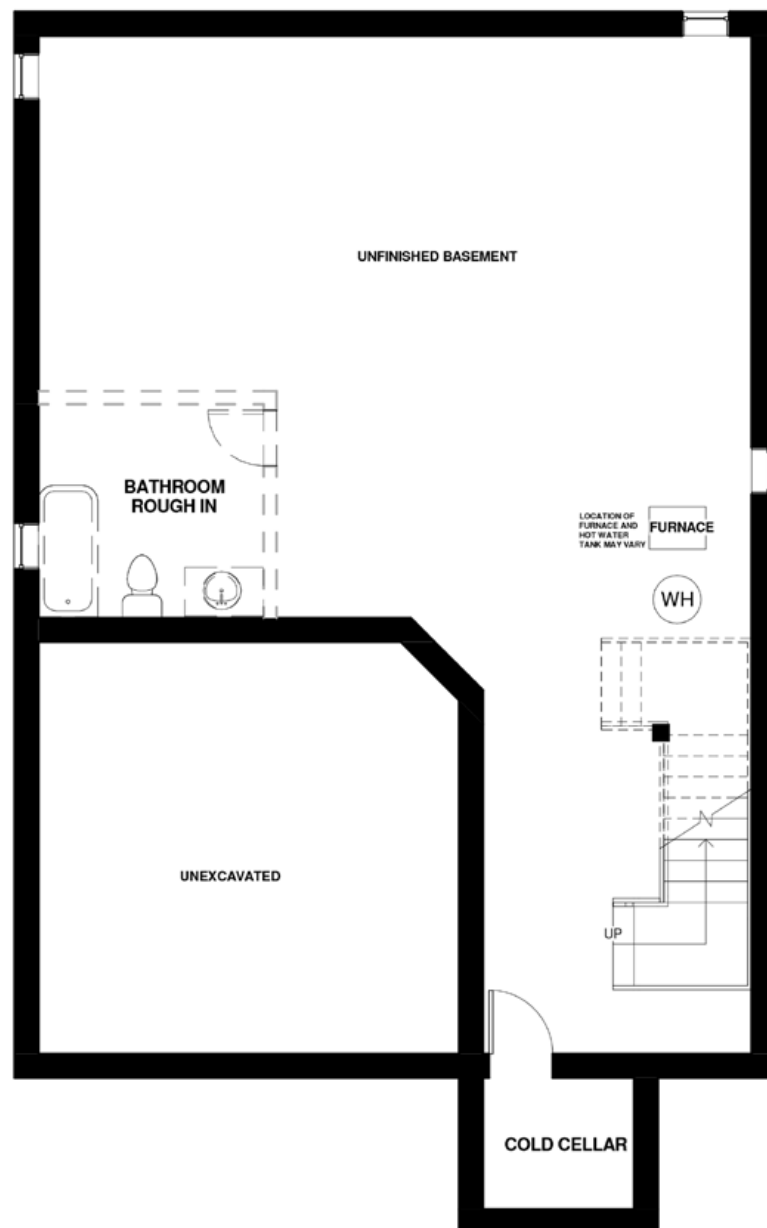
2406. SQ.FT.



GROUND FLOOR : 1049 sq.ft.



SECOND FLOOR : 1357 sq.ft.



BASEMENT

Notes:

- Base prices are subject to change.
- Prices include HST with rebate going to the builder.
- Prices do not include Lot Premiums on enlarged/pie shaped lots.
- The height of the main floor ceiling is 8'.
- **Elevation A** – Front elevation to have **stone/stucco** on first floor with **stucco** on the 2nd floor. Side and back elevations to be all **vinyl siding**.
- **Elevation B** – Front elevation to have **stone** on first floor with **stucco** on the 2nd floor. Side and back elevations to be all **vinyl siding**.
- **Elevation C** – Front elevation to have **stone** on first floor with **stucco** on the 2nd floor. Side and back elevations to include **stucco** with the balance to be **vinyl siding**.

*All dimensions are approximate. Sizes and specifications are subject to change without notice. E. & O. E. All illustrations are artist's concept. Actual usable floor space varies from the stated floor area.